

SRSF2 Rabbit Polyclonal Antibody



CAB3635

Product Information

Size:

20uL, 50uL, 100uL, 200uL

Observed MW:

28kDa/32kDa

Calculated MW:

24kDa/25kDa

Applications:

WB IHC

Reactivity:

Human, Mouse, Rat

Antibody Information

Recommended dilutions:

WB 1:500 - 1:2000 IHC 1:50
- 1:200

Source:

Rabbit

Isotype:

IgG

Purification:

Affinity purification

Protein Background

The protein encoded by this gene is a member of the serine/arginine (SR)-rich family of pre-mRNA splicing factors, which constitute part of the spliceosome. Each of these factors contains an RNA recognition motif (RRM) for binding RNA and an RS domain for binding other proteins. The RS domain is rich in serine and arginine residues and facilitates interaction between different SR splicing factors. In addition to being critical for mRNA splicing, the SR proteins have also been shown to be involved in mRNA export from the nucleus and in translation. Two transcript variants encoding the same protein and one non-coding transcript variant have been found for this gene. In addition, a pseudogene of this gene has been found on chromosome 11.

Immunogen information

Gene ID:

6427

Uniprot

Q01130

Synonyms:

SRSF2; PR264; SC-35; SC35; SFRS2; SFRS2A; SRp30b

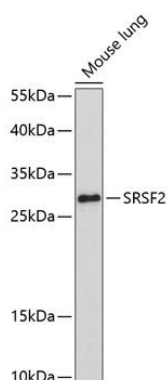
Immunogen:

Recombinant fusion protein containing a sequence corresponding to amino acids 1-75 of human SRSF2 (NP_003007.2).

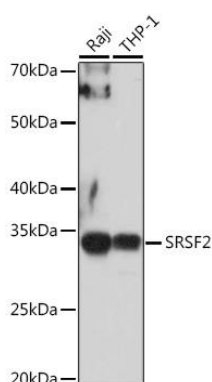
Storage:

Store at -20°C. Avoid freeze / thaw cycles. Buffer: PBS with 0.02% sodium azide, 50% glycerol, pH7.3.

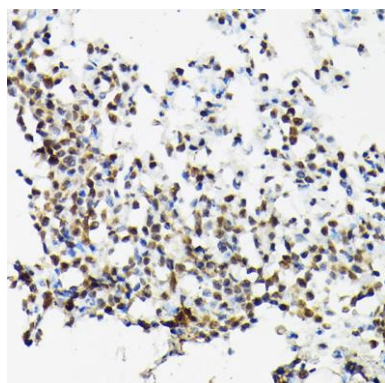
Product Images



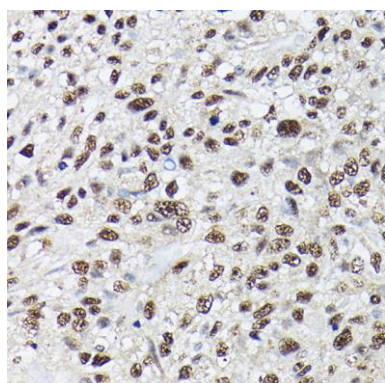
Western blot analysis of extracts of mouse lung, using SRSF2 antibody (CAB3635) at 1:1000 dilution. Secondary antibody: HRP Goat Anti-Rabbit IgG (H+L) (CABS014) at 1:10000 dilution. Lysates/proteins: 25ug per lane. Blocking buffer: 3% nonfat dry milk in TBST. Detection: ECL Enhanced Kit (CABM00021). Exposure time: 90s.



Western blot analysis of extracts of various cell lines, using SRSF2 antibody (CAB3635) at 1:1000 dilution. Secondary antibody: HRP Goat Anti-Rabbit IgG (H+L) (CABS014) at 1:10000 dilution. Lysates/proteins: 25ug per lane. Blocking buffer: 3% nonfat dry milk in TBST. Detection: ECL Basic Kit (CABM00020). Exposure time: 10s.



Immunohistochemistry of paraffin-embedded Rat lung using SRSF2 antibody (CAB3635) at dilution of 1:100 (40x lens).



Immunohistochemistry of paraffin-embedded Human lung using SRSF2 antibody (CAB3635) at dilution of 1:100 (40x lens).