

ATG16L1 Rabbit Monoclonal Antibody



CAB3637

Product Information

Size:

20uL, 50uL, 100uL, 200uL

Observed MW:

68kDa/72kDa

Calculated MW:

68kDa

Applications:

WB

Reactivity:

Human, Mouse

Protein Background

The protein encoded by this gene is part of a large protein complex that is necessary for autophagy, the major process by which intracellular components are targeted to lysosomes for degradation. Defects in this gene are a cause of susceptibility to inflammatory bowel disease type 10 (IBD10). Several transcript variants encoding different isoforms have been found for this gene.[provided by RefSeq, Jun 2010]

Immunogen information

Gene ID:

55054

Uniprot

Q676U5

Synonyms:

APG16L; ATG16A; ATG16L; IBD10; WDR30

Antibody Information

Recommended dilutions:

WB 1:500 - 1:2000

Source:

Rabbit

Isotype:

IgG

Purification:

Affinity purification

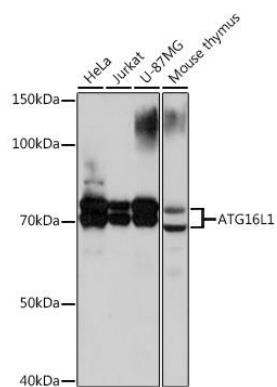
Immunogen:

A synthesized peptide derived from human ATG16L1

Storage:

Store at -20°C. Avoid freeze / thaw cycles. Buffer: PBS with 0.02% sodium azide, 0.05% BSA, 50% glycerol, pH7.3.

Product Images



Western blot - ATG16L1 Rabbit mAb (CAB3637)