

CTR9 Rabbit Polyclonal Antibody



CAB3659

Product Information

Size:

20uL, 50uL, 100uL, 200uL

Observed MW:

145kDa

Calculated MW:

133kDa

Applications:

WB

Reactivity:

Human

Protein Background

The protein encoded by this gene is a component of the PAF1 complex, which associates with RNA polymerase II and functions in transcriptional regulation and elongation. This complex also plays a role in the modification of histones.

Immunogen information

Gene ID:

9646

Uniprot

Q6PD62

Synonyms:

CTR9; SH2BP1; TSBP; p150; p150TSP

Antibody Information

Recommended dilutions:

WB 1:1000 - 1:2000

Source:

Rabbit

Isotype:

IgG

Purification:

Affinity purification

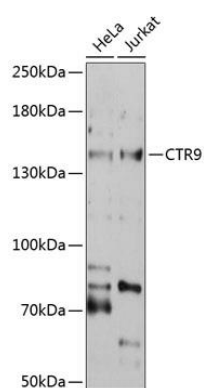
Immunogen:

Recombinant fusion protein containing a sequence corresponding to amino acids 1024-1173 of human CTR9 (NP_055448.1).

Storage:

Store at -20°C. Avoid freeze / thaw cycles. Buffer: PBS with 0.02% sodium azide, 50% glycerol, pH7.3.

Product Images



Western blot analysis of extracts of various cell lines, using CTR9 antibody (CAB3659) at 1:1000 dilution. Secondary antibody: HRP Goat Anti-Rabbit IgG (H+L) (CABS014) at 1:10000 dilution. Lysates/proteins: 25ug per lane. Blocking buffer: 3% nonfat dry milk in TBST. Detection: ECL Basic Kit (CABM00020). Exposure time: 30s.