

# CIT Rabbit Polyclonal Antibody



CAB3668

## Product Information

### Size:

20uL, 50uL, 100uL, 200uL

### Observed MW:

231kDa

### Calculated MW:

54kDa/177kDa/231kDa/236kDa

### Applications:

WB

### Reactivity:

Human, Mouse

## Protein Background

This gene encodes a serine/threonine-protein kinase that functions in cell division. Together with the kinesin KIF14, this protein localizes to the central spindle and midbody, and functions to promote efficient cytokinesis. This protein is involved in central nervous system development. Polymorphisms in this gene are associated with bipolar disorder and risk for schizophrenia. Alternative splicing results in multiple transcript variants.

## Immunogen information

### Gene ID:

11113

### Uniprot

O14578

### Synonyms:

CIT; CITK; CRIK; MCPH17; STK21

## Antibody Information

### Recommended dilutions:

WB 1:500 - 1:2000

### Source:

Rabbit

### Isotype:

IgG

### Purification:

Affinity purification

### Immunogen:

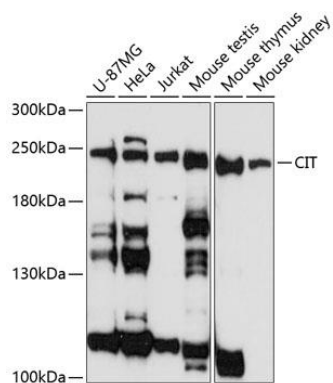
Recombinant fusion protein containing a sequence corresponding to amino acids 1000-1300 of human CIT (NP\_001193928.1).

### Storage:

Store at -20°C. Avoid freeze / thaw cycles. Buffer: PBS with 0.02% sodium azide, 50% glycerol, pH7.3.

## Product Images

---



Western blot analysis of extracts of various cell lines, using CIT antibody (CAB3668) at 1:3000 dilution. Secondary antibody: HRP Goat Anti-Rabbit IgG (H+L) (CABS014) at 1:10000 dilution. Lysates/proteins: 25ug per lane. Blocking buffer: 3% nonfat dry milk in TBST. Detection: ECL Basic Kit (CABM00020). Exposure time: 90s.