

[KO Validated] HIF1AN/FIH1 Rabbit Monoclonal Antibody

CAB3701



Product Information

Size:

20uL, 50uL, 100uL, 200uL

Observed MW:

40KDa

Calculated MW:

40kDa

Applications:

WB

Reactivity:

Human

Antibody Information

Recommended dilutions:

WB 1:500 - 1:2000

Source:

Rabbit

Isotype:

IgG

Purification:

Affinity purification

Protein Background

Immunogen information

Gene ID:

55662

Uniprot

Q9NWT6

Synonyms:

FIH1

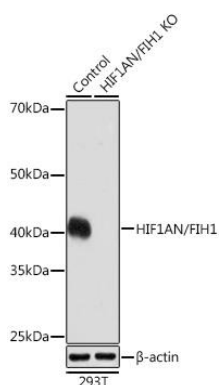
Immunogen:

A synthesized peptide derived from human HIF1AN/FIH1

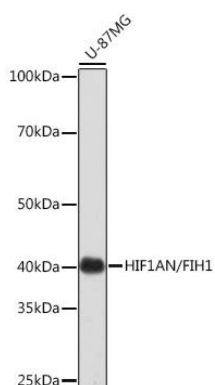
Storage:

Store at -20°C. Avoid freeze / thaw cycles. Buffer: PBS with 0.02% sodium azide, 0.05% BSA, 50% glycerol, pH7.3.

Product Images



Western blot analysis of extracts from normal (control) and HIF1AN/FIH1 knockout (KO) 293T cells, using HIF1AN/FIH1 antibody (CAB3701) at 1:1000 dilution. Secondary antibody: HRP Goat Anti-Rabbit IgG (H+L) (CABS014) at 1:10000 dilution. Lysates/proteins: 25ug per lane. Blocking buffer: 3% nonfat dry milk in TBST. Detection: ECL Basic Kit (CABM00020). Exposure time: 3min.



Western blot analysis of extracts of U-87MG cells, using HIF1AN/FIH1 Rabbit mAb (CAB3701) at 1:1000 dilution. Secondary antibody: HRP Goat Anti-Rabbit IgG (H+L) (CABS014) at 1:10000 dilution. Lysates/proteins: 25ug per lane. Blocking buffer: 3% nonfat dry milk in TBST. Detection: ECL Basic Kit (CABM00020). Exposure time: 3min.