

# ALDH1B1 Rabbit Polyclonal Antibody



CAB3725

---

## Product Information

### Size:

20uL, 50uL, 100uL, 200uL

### Observed MW:

57kDa

### Calculated MW:

57kDa

### Applications:

WB IF

### Reactivity:

Human, Mouse, Rat

## Protein Background

This protein belongs to the aldehyde dehydrogenases family of proteins. Aldehyde dehydrogenase is the second enzyme of the major oxidative pathway of alcohol metabolism. This gene does not contain introns in the coding sequence. The variation of this locus may affect the development of alcohol-related problems.

## Immunogen information

### Gene ID:

219

### Uniprot

P30837

### Synonyms:

ALDH1B1; ALDH5; ALDHX

## Antibody Information

### Recommended dilutions:

WB 1:500 - 1:2000 IF 1:50 - 1:200

### Source:

Rabbit

### Isotype:

IgG

### Purification:

Affinity purification

### Immunogen:

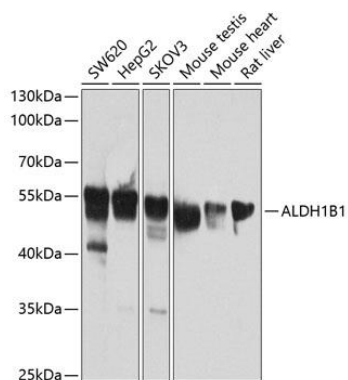
Recombinant fusion protein containing a sequence corresponding to amino acids 278-517 of human ALDH1B1 (NP\_000683.3).

### Storage:

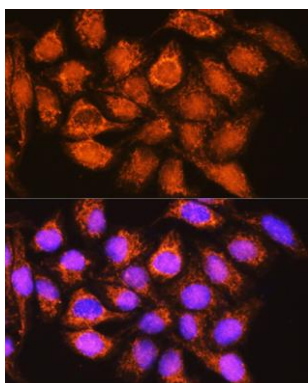
Store at -20°C. Avoid freeze / thaw cycles. Buffer: PBS with 0.02% sodium azide, 50% glycerol, pH7.3.

## Product Images

---



Western blot analysis of extracts of various cell lines, using ALDH1B1 antibody (CAB3725) at 1:1000 dilution. Secondary antibody: HRP Goat Anti-Rabbit IgG (H+L) (CABS014) at 1:10000 dilution. Lysates/proteins: 25ug per lane. Blocking buffer: 3% nonfat dry milk in TBST. Detection: ECL Basic Kit (CABM00020). Exposure time: 30s.



Immunofluorescence analysis of HeLa cells using ALDH1B1 Rabbit pAb (CAB3725) at dilution of 1:100. Blue: DAPI for nuclear staining.