

Desmin Rabbit Monoclonal Antibody



CAB3736

Product Information

Size:

20uL, 50uL, 100uL, 200uL

Observed MW:

54KDa

Calculated MW:

53kDa

Applications:

WB IHC IF

Reactivity:

Human, Mouse, Rat

Protein Background

This gene encodes a muscle-specific class III intermediate filament. Homopolymers of this protein form a stable intracytoplasmic filamentous network connecting myofibrils to each other and to the plasma membrane. Mutations in this gene are associated with desmin-related myopathy, a familial cardiac and skeletal myopathy (CSM), and with distal myopathies. [provided by RefSeq, Jul 2008]

Immunogen information

Gene ID:

1674

Uniprot

P17661

Synonyms:

CSM1; CSM2; LGMD2R

Antibody Information

Recommended dilutions:

WB 1:500 - 1:2000 IHC 1:50
- 1:200 IF 1:50 - 1:200

Source:

Rabbit

Isotype:

IgG

Purification:

Affinity purification

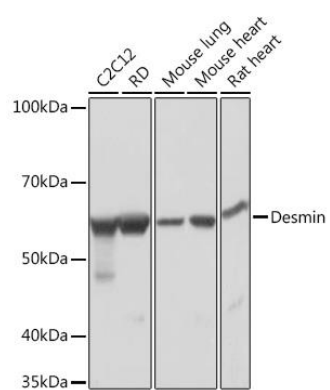
Immunogen:

A synthesized peptide derived from human Desmin

Storage:

Store at -20°C. Avoid freeze / thaw cycles. Buffer: PBS with 0.02% sodium azide, 0.05% BSA, 50% glycerol, pH7.3.

Product Images



Western blot - Desmin Rabbit mAb (CAB3736)