

ARHGAP1 Rabbit Polyclonal Antibody



CAB3739

Product Information

Size:

20uL, 50uL, 100uL, 200uL

Observed MW:

50kDa

Calculated MW:

50kDa

Applications:

WB IF IP

Reactivity:

Human, Mouse, Rat

Protein Background

This gene encodes a member of a large family of proteins that activate Rho-type guanosine triphosphate (GTP) metabolizing enzymes. The encoded protein contains a SRC homology 3 domain and interacts with Bcl-2-associated protein family members.

Immunogen information

Gene ID:

392

Uniprot

Q07960

Synonyms:

ARHGAP1; CDC42GAP; RHOGAP; RHOGAP1; p50rhoGAP

Antibody Information

Recommended dilutions:

WB 1:500 - 1:2000 IF 1:50 -
1:200 IP 1:50 - 1:100

Source:

Rabbit

Isotype:

IgG

Purification:

Affinity purification

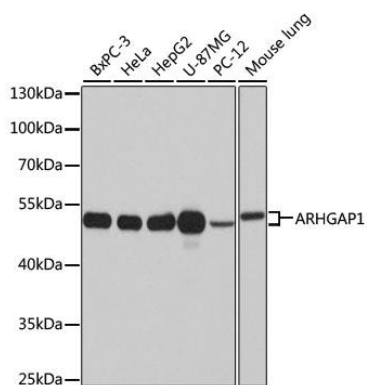
Immunogen:

Recombinant fusion protein containing a sequence corresponding to amino acids 210-439 of human ARHGAP1 (NP_004299.1).

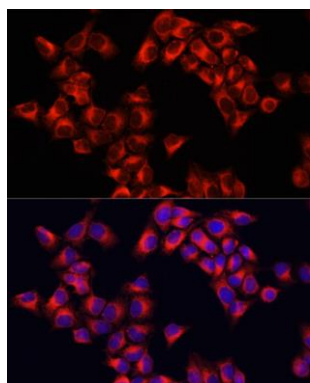
Storage:

Store at -20°C. Avoid freeze / thaw cycles. Buffer: PBS with 0.02% sodium azide, 50% glycerol, pH7.3.

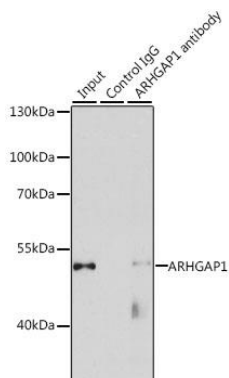
Product Images



Western blot analysis of extracts of various cell lines, using ARHGAP1 antibody (CAB3739) at 1:1000 dilution. Secondary antibody: HRP Goat Anti-Rabbit IgG (H+L) (CABS014) at 1:10000 dilution. Lysates/proteins: 25ug per lane. Blocking buffer: 3% nonfat dry milk in TBST. Detection: ECL Basic Kit (CABM00020). Exposure time: 15s.



Immunofluorescence analysis of HeLa cells using ARHGAP1 antibody (CAB3739) at dilution of 1:100. Blue: DAPI for nuclear staining.



Immunoprecipitation analysis of 200ug extracts of HeLa cells, using 3 ug ARHGAP1 antibody (CAB3739). Western blot was performed from the immunoprecipitate using ARHGAP1 antibody (CAB3739) at a dilution of 1:1000.