

ARHGDIB Rabbit Polyclonal Antibody



CAB3740

Product Information

Size:

20uL, 50uL, 100uL, 200uL

Observed MW:

23kDa

Calculated MW:

22kDa

Applications:

WB

Reactivity:

Human, Mouse

Antibody Information

Recommended dilutions:

WB 1:500 - 1:2000

Source:

Rabbit

Isotype:

IgG

Purification:

Affinity purification

Protein Background

Immunogen information

Gene ID:

397

Uniprot

P52566

Synonyms:

ARHGDIB; D4; GDIA2; GDID4; LYGDI; Ly-GDI; RAP1GN1; RhoGDI2

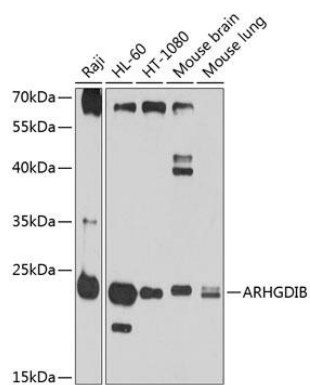
Immunogen:

Recombinant fusion protein containing a sequence corresponding to amino acids 1-201 of human ARHGDIB (NP_001166.3).

Storage:

Store at -20°C. Avoid freeze / thaw cycles. Buffer: PBS with 0.02% sodium azide, 50% glycerol, pH7.3.

Product Images



Western blot analysis of extracts of various cell lines, using ARHGDI B antibody (CAB3740) at 1:1000 dilution. Secondary antibody: HRP Goat Anti-Rabbit IgG (H+L) (CABS014) at 1:10000 dilution. Lysates/proteins: 25ug per lane. Blocking buffer: 3% nonfat dry milk in TBST. Detection: ECL Basic Kit (CABM00020). Exposure time: 30s.