

# PUMA Rabbit Monoclonal Antibody



CAB3752

## Product Information

### Size:

20uL, 50uL, 100uL, 200uL

### Observed MW:

18KDa/23KDa

### Calculated MW:

18kDa

### Applications:

WB IHC IF

### Reactivity:

Human, Mouse, Rat

## Antibody Information

### Recommended dilutions:

WB 1:500 - 1:2000 IHC 1:50  
- 1:200 IF 1:50 - 1:200

### Source:

Rabbit

### Isotype:

IgG

### Purification:

Affinity purification

## Protein Background

This gene encodes a member of the BCL-2 family of proteins. This family member belongs to the BH3-only pro-apoptotic subclass. The protein cooperates with direct activator proteins to induce mitochondrial outer membrane permeabilization and apoptosis. It can bind to anti-apoptotic Bcl-2 family members to induce mitochondrial dysfunction and caspase activation. Because of its pro-apoptotic role, this gene is a potential drug target for cancer therapy and for tissue injury. Alternative splicing results in multiple transcript variants. [provided by RefSeq, Dec 2011]

## Immunogen information

### Gene ID:

27113

### Uniprot

Q96PG8/Q9BXH1

### Synonyms:

JFY-1; JFY1; PUMA

### Immunogen:

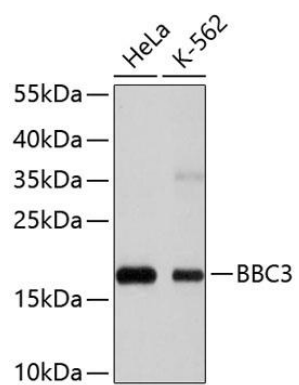
A synthesized peptide derived from human PUMA

### Storage:

Store at -20°C. Avoid freeze / thaw cycles. Buffer: PBS with 0.02% sodium azide, 0.05% BSA, 50% glycerol, pH7.3.

## Product Images

---



Western blot - PUMA Rabbit mAb (CAB3752)