

ENTPD1/CD39 Rabbit Polyclonal Antibody



CAB3778

Product Information

Size:

20uL, 50uL, 100uL, 200uL

Observed MW:

65kDa

Calculated MW:

34kDa/42kDa/46kDa/57kDa/
58kDa/59kDa

Applications:

WB IF

Reactivity:

Human, Mouse, Rat

Antibody Information

Recommended dilutions:

WB 1:200 - 1:1000 IF 1:50 -
1:200

Source:

Rabbit

Isotype:

IgG

Purification:

Affinity purification

Protein Background

The protein encoded by this gene is a plasma membrane protein that hydrolyzes extracellular ATP and ADP to AMP. Inhibition of this protein's activity may confer anticancer benefits. Several transcript variants encoding different isoforms have been found for this gene.

Immunogen information

Gene ID:

953

Uniprot

P49961

Synonyms:

ENTPD1; ATPDase; CD39; NTPDase-1; SPG64

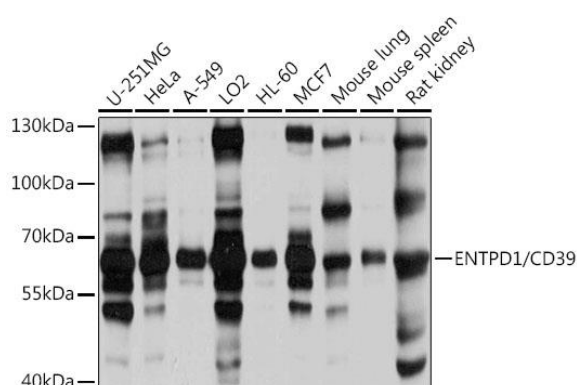
Immunogen:

Recombinant fusion protein containing a sequence corresponding to amino acids 1-180 of human ENTDP1/CD39 (NP_001157655.1).

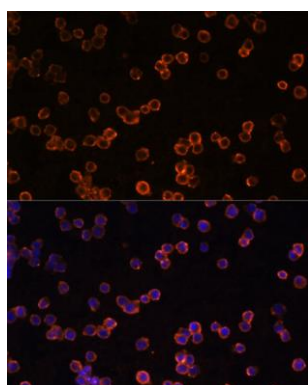
Storage:

Store at -20°C. Avoid freeze / thaw cycles. Buffer: PBS with 0.02% sodium azide, 50% glycerol, pH7.3.

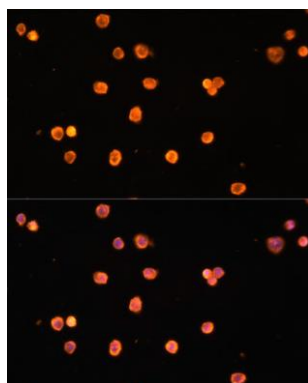
Product Images



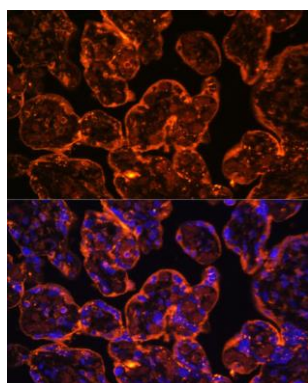
Western blot analysis of extracts of various cell lines, using ENTPD1/CD39 antibody (CAB3778) at 1:1000 dilution. Secondary antibody: HRP Goat Anti-Rabbit IgG (H+L) (CABS014) at 1:10000 dilution. Lysates/proteins: 25ug per lane. Blocking buffer: 3% nonfat dry milk in TBST. Detection: ECL Basic Kit (CABM00020). Exposure time: 5s.



Immunofluorescence analysis of Raw264.7 cells using ENTPD1/CD39 Polyclonal Antibody (CAB3778) at dilution of 1:100 (40x lens). Blue: DAPI for nuclear staining.



Immunofluorescence analysis of THP-1 cells using ENTPD1/CD39 Polyclonal Antibody (CAB3778) at dilution of 1:100 (40x lens). Blue: DAPI for nuclear staining.



Immunofluorescence analysis of human placenta using ENTPD1/CD39 Polyclonal Antibody (CAB3778) at dilution of 1:100 (40x lens). Blue: DAPI for nuclear staining.