

CKS2 Rabbit Polyclonal Antibody



CAB3791

Product Information

Size:

20uL, 50uL, 100uL, 200uL

Observed MW:

14kDa

Calculated MW:

9kDa

Applications:

WB IHC

Reactivity:

Mouse, Rat

Protein Background

CKS2 protein binds to the catalytic subunit of the cyclin dependent kinases and is essential for their biological function. The CKS2 mRNA is found to be expressed in different patterns through the cell cycle in HeLa cells, which reflects specialized role for the encoded protein.

Immunogen information

Gene ID:

1164

Uniprot

P33552

Synonyms:

CKS2; CKSHS2

Antibody Information

Recommended dilutions:

WB 1:500 - 1:2000 IHC 1:50
- 1:100

Source:

Rabbit

Isotype:

IgG

Purification:

Affinity purification

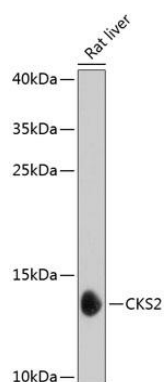
Immunogen:

Recombinant fusion protein containing a sequence corresponding to amino acids 1-79 of human CKS2 (NP_001818.1).

Storage:

Store at -20°C. Avoid freeze / thaw cycles. Buffer: PBS with 0.02% sodium azide, 50% glycerol, pH7.3.

Product Images



Western blot analysis of extracts of rat liver, using CKS2 antibody (CAB3791) at 1:1000 dilution. Secondary antibody: HRP Goat Anti-Rabbit IgG (H+L) (CABS014) at 1:10000 dilution. Lysates/proteins: 25ug per lane. Blocking buffer: 3% nonfat dry milk in TBST. Detection: ECL Basic Kit (CABM00020). Exposure time: 30s.