

# CLTA Rabbit Polyclonal Antibody



CAB3793

---

## Product Information

### Size:

20uL, 50uL, 100uL, 200uL

### Observed MW:

33kDa

### Calculated MW:

17kDa/23kDa/24kDa/25kDa/  
27kDa

### Applications:

WB

### Reactivity:

Human, Mouse, Rat

## Antibody Information

### Recommended dilutions:

WB 1:200 - 1:2000

### Source:

Rabbit

### Isotype:

IgG

### Purification:

Affinity purification

## Protein Background

Clathrin is a large, soluble protein composed of heavy and light chains. It functions as the main structural component of the lattice-type cytoplasmic face of coated pits and vesicles which entrap specific macromolecules during receptor-mediated endocytosis. This gene encodes one of two clathrin light chain proteins which are believed to function as regulatory elements. Alternative splicing results in multiple transcript variants. Related pseudogenes have been identified on chromosomes 8 and 12.

## Immunogen information

### Gene ID:

1211

### Uniprot

P09496

### Synonyms:

CLTA; LCA

### Immunogen:

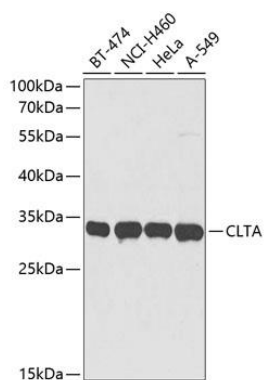
Recombinant fusion protein containing a sequence corresponding to amino acids 1-218 of human CLTA (NP\_001824.1).

### Storage:

Store at -20°C. Avoid freeze / thaw cycles. Buffer: PBS with 0.02% sodium azide, 50% glycerol, pH7.3.

## Product Images

---



Western blot analysis of extracts of various cell lines, using CLTA antibody (CAB3793) at 1:3000 dilution. Secondary antibody: HRP Goat Anti-Rabbit IgG (H+L) (CABS014) at 1:10000 dilution. Lysates/proteins: 25ug per lane. Blocking buffer: 3% nonfat dry milk in TBST. Detection: ECL Basic Kit (CABM00020). Exposure time: 10s.