

NUDEL Rabbit Monoclonal Antibody



CAB3799

Product Information

Size:

20uL, 50uL, 100uL, 200uL

Observed MW:

40KDa

Calculated MW:

40kDa

Applications:

WB

Reactivity:

Human, Mouse, Rat

Protein Background

This gene encodes a coiled-coil protein that plays a role in multiple processes including cytoskeletal organization, cell signaling and neuron migration, outgrowth and maintenance. Alternatively spliced transcript variants encoding multiple isoforms have been observed for this gene, and a pseudogene of this gene is located on the long arm of chromosome X. [provided by RefSeq, Mar 2012]

Immunogen information

Gene ID:

81565

Uniprot

Q9GZM8

Synonyms:

EOPA; MITAP1; NDE1L1; NDE2; NUDEL

Antibody Information

Recommended dilutions:

WB 1:500 - 1:2000

Source:

Rabbit

Isotype:

IgG

Purification:

Affinity purification

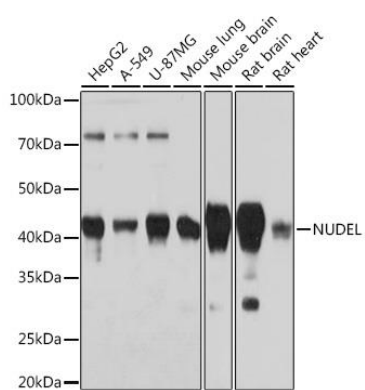
Immunogen:

A synthesized peptide derived from human NUDEL

Storage:

Store at -20°C. Avoid freeze / thaw cycles. Buffer: PBS with 0.02% sodium azide, 0.05% BSA, 50% glycerol, pH7.3.

Product Images



Western blot - NUDEL Rabbit mAb (CAB3799)