

Exportin 5 Rabbit Monoclonal Antibody



CAB3813

Product Information

Size:

20uL, 50uL, 100uL, 200uL

Observed MW:

136KDa

Calculated MW:

136kDa

Applications:

WB IHC

Reactivity:

Human, Mouse, Rat

Protein Background

This gene encodes a member of the karyopherin family that is required for the transport of small RNAs and double-stranded RNA-binding proteins from the nucleus to the cytoplasm. The encoded protein translocates cargo through the nuclear pore complex in a RanGTP-dependent process. [provided by RefSeq, Aug 2011]

Immunogen information

Gene ID:

57510

Uniprot

Q9HAV4

Synonyms:

exp5

Antibody Information

Recommended dilutions:

WB 1:500 - 1:2000 IHC

1:50 - 1:200

Source:

Rabbit

Isotype:

IgG

Purification:

Affinity purification

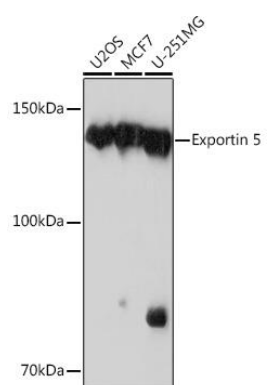
Immunogen:

A synthesized peptide derived from human Exportin 5

Storage:

Store at -20°C. Avoid freeze / thaw cycles. Buffer: PBS with 0.02% sodium azide, 0.05% BSA, 50% glycerol, pH7.3.

Product Images



Western blot - Exportin 5 Rabbit mAb (CAB3813)