

# CTPS1 Rabbit Polyclonal Antibody



CAB3817

## Product Information

### Size:

20uL, 50uL, 100uL, 200uL

### Observed MW:

80kDa

### Calculated MW:

41kDa/66kDa

### Applications:

WB

### Reactivity:

Human, Mouse

## Protein Background

This gene encodes an enzyme responsible for the catalytic conversion of UTP (uridine triphosphate) to CTP (cytidine triphosphate). This reaction is an important step in the biosynthesis of phospholipids and nucleic acids. Activity of this protein is important in the immune system, and loss of function of this gene has been associated with immunodeficiency. Alternative splicing results in multiple transcript variants.

## Immunogen information

### Gene ID:

1503

### Uniprot

P17812

### Synonyms:

CTPS1; CTPS; GATD5; IMD24

## Antibody Information

### Recommended dilutions:

WB 1:500 - 1:2000

### Source:

Rabbit

### Isotype:

IgG

### Purification:

Affinity purification

### Immunogen:

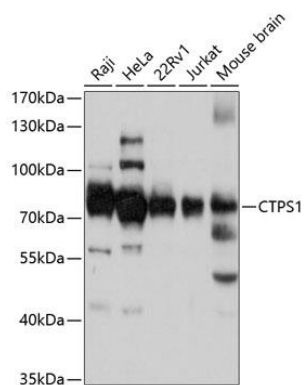
Recombinant fusion protein containing a sequence corresponding to amino acids 402-591 of human CTPS1 (NP\_001896.2).

### Storage:

Store at -20°C. Avoid freeze / thaw cycles. Buffer: PBS with 0.02% sodium azide, 50% glycerol, pH7.3.

## Product Images

---



Western blot analysis of extracts of various cell lines, using CTPS1 antibody (CAB3817) at 1:3000 dilution. Secondary antibody: HRP Goat Anti-Rabbit IgG (H+L) (CABS014) at 1:10000 dilution. Lysates/proteins: 25ug per lane. Blocking buffer: 3% nonfat dry milk in TBST. Detection: ECL Basic Kit (CABM00020). Exposure time: 5s.