

# TREX1 Rabbit Monoclonal Antibody



CAB3819

---

## Product Information

### Size:

20uL, 50uL, 100uL, 200uL

### Observed MW:

33KDa

### Calculated MW:

33kDa

### Applications:

WB

### Reactivity:

Human

## Protein Background

This gene encodes a nuclear protein with 3' exonuclease activity. The encoded protein may play a role in DNA repair and serve as a proofreading function for DNA polymerase. Mutations in this gene result in Aicardi-Goutieres syndrome, chilblain lupus, Cree encephalitis, and other diseases of the immune system. Alternative splicing results in multiple transcript variants. [provided by RefSeq, Sep 2012]

## Immunogen information

### Gene ID:

11277

### Uniprot

Q9NSU2

### Synonyms:

AGS1; CRV; DRN3; HERN3

## Antibody Information

### Recommended dilutions:

WB 1:500 - 1:2000

### Source:

Rabbit

### Isotype:

IgG

### Purification:

Affinity purification

### Immunogen:

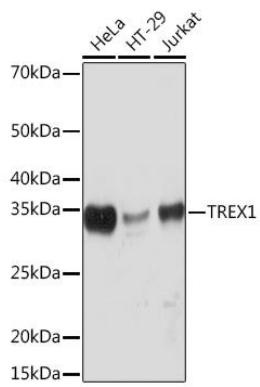
A synthesized peptide derived from human TREX1

### Storage:

Store at -20°C. Avoid freeze / thaw cycles. Buffer: PBS with 0.02% sodium azide, 0.05% BSA, 50% glycerol, pH7.3.

## Product Images

---



Western blot - TREX1 Rabbit mAb (CAB3819)