

# CYLD Rabbit Polyclonal Antibody



CAB3821

## Product Information

### Size:

20uL, 50uL, 100uL, 200uL

### Observed MW:

107KDa

### Calculated MW:

107kDa

### Applications:

WB IHC

### Reactivity:

Human, Mouse, Rat

## Protein Background

This gene encodes a cytoplasmic protein with three cytoskeletal-associated protein-glycine-conserved (CAP-GLY) domains that functions as a deubiquitinating enzyme. Mutations in this gene have been associated with cylindromatosis, multiple familial trichoepithelioma, and Brooke-Spiegler syndrome. Alternate transcriptional splice variants, encoding different isoforms, have been characterized.

## Immunogen information

### Gene ID:

1540

### Uniprot

Q9NQC7

### Synonyms:

CYLD; BRSS; CDMT; CYLD1; CYLDI; EAC; MFT; MFT1; SBS; TEM; USPL2

## Antibody Information

### Recommended dilutions:

WB 1:200 - 1:2000 IHC 1:50 - 1:200

### Source:

Rabbit

### Isotype:

IgG

### Purification:

Affinity purification

### Immunogen:

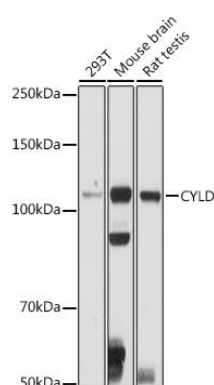
Recombinant fusion protein containing a sequence corresponding to amino acids 654-953 of human CYLD (NP\_001035877.1).

### Storage:

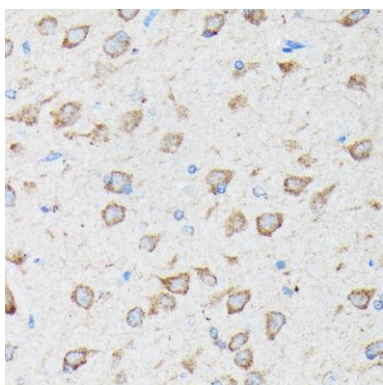
Store at -20°C. Avoid freeze / thaw cycles. Buffer: PBS with 0.02% sodium azide, 50% glycerol, pH7.3.

## Product Images

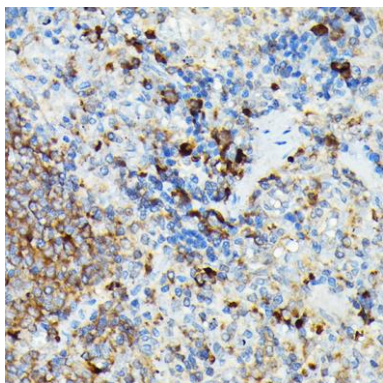
---



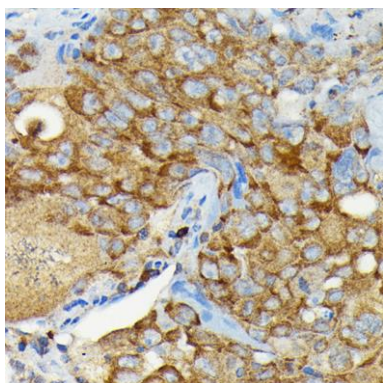
Western blot analysis of extracts of various cell lines, using CYLD antibody (CAB3821) at 1:500 dilution. Secondary antibody: HRP Goat Anti-Rabbit IgG (H+L) (CABS014) at 1:10000 dilution. Lysates/proteins: 25ug per lane. Blocking buffer: 3% nonfat dry milk in TBST. Detection: ECL Basic Kit (CABM00020). Exposure time: 90s.



Immunohistochemistry of paraffin-embedded rat brain using CYLD Rabbit pAb (CAB3821) at dilution of 1:100 (40x lens).



Immunohistochemistry of paraffin-embedded rat spleen using CYLD Rabbit pAb (CAB3821) at dilution of 1:100 (40x lens).



Immunohistochemistry of paraffin-embedded human lung cancer using CYLD Rabbit pAb (CAB3821) at dilution of 1:100 (40x lens).