

DDC Rabbit Polyclonal Antibody



CAB3828

Product Information

Size:

20uL, 50uL, 100uL, 200uL

Observed MW:

54-56kDa

Calculated MW:

37kDa/44kDa/45kDa/53kDa

Applications:

WB

Reactivity:

Human, Mouse, Rat

Antibody Information

Recommended dilutions:

WB 1:200 - 1:2000

Source:

Rabbit

Isotype:

IgG

Purification:

Affinity purification

Protein Background

The encoded protein catalyzes the decarboxylation of L-3, 4-dihydroxyphenylalanine (DOPA) to dopamine, L-5-hydroxytryptophan to serotonin and L-tryptophan to tryptamine. Defects in this gene are the cause of aromatic L-amino-acid decarboxylase deficiency (AADCD). AADCD deficiency is an inborn error in neurotransmitter metabolism that leads to combined serotonin and catecholamine deficiency. Multiple alternatively spliced transcript variants encoding different isoforms have been identified for this gene.

Immunogen information

Gene ID:

1644

Uniprot

P20711

Synonyms:

DDC; AADC

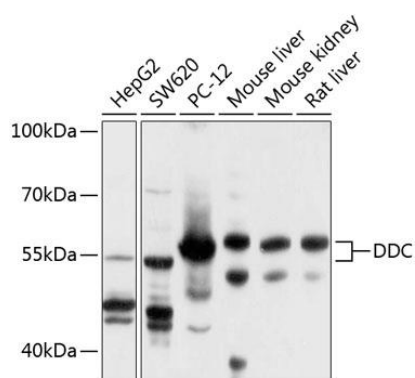
Immunogen:

Recombinant fusion protein containing a sequence corresponding to amino acids 1-100 of human DDC (NP_000781.1).

Storage:

Store at -20°C. Avoid freeze / thaw cycles. Buffer: PBS with 0.02% sodium azide, 50% glycerol, pH7.3.

Product Images



Western blot analysis of extracts of various cell lines, using DDC antibody (CAB3828) at 1:1000 dilution. Secondary antibody: HRP Goat Anti-Rabbit IgG (H+L) (CABS014) at 1:10000 dilution. Lysates/proteins: 25ug per lane. Blocking buffer: 3% nonfat dry milk in TBST. Detection: ECL Basic Kit (CABM00020). Exposure time: 60s.