

Myosin light chain kinase Rabbit Monoclonal Antibody

CAB3835



Product Information

Size:

20uL, 50uL, 100uL, 200uL

Observed MW:

130KDa/140KDa/270KDa

Calculated MW:

200kDa

Applications:

WB

Reactivity:

Human, Mouse, Rat

Antibody Information

Recommended dilutions:

WB 1:500 - 1:2000

Source:

Rabbit

Isotype:

IgG

Purification:

Affinity purification

Protein Background

This gene, a muscle member of the immunoglobulin gene superfamily, encodes myosin light chain kinase which is a calcium/calmodulin dependent enzyme. This kinase phosphorylates myosin regulatory light chains to facilitate myosin interaction with actin filaments to produce contractile activity. This gene encodes both smooth muscle and nonmuscle isoforms. In addition, using a separate promoter in an intron in the 3' region, it encodes telokin, a small protein identical in sequence to the C-terminus of myosin light chain kinase, that is independently expressed in smooth muscle and functions to stabilize unphosphorylated myosin filaments. A pseudogene is located on the p arm of chromosome 3. Four transcript variants that produce four isoforms of the calcium/calmodulin dependent enzyme have been identified as well as two transcripts that produce two isoforms of telokin. Additional variants have been identified but lack full length transcripts. [provided by RefSeq, Jul 2008]

Immunogen information

Gene ID:

4638

Uniprot

Q15746

Synonyms:

AAT7; KRP; MLCK; MLCK1; MLCK108; MLCK210; MSTP083; MYLK1; smMLCK

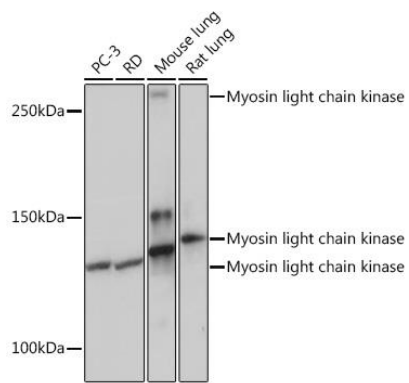
Immunogen:

A synthesized peptide derived from human Myosin light chain kinase

Storage:

Store at -20°C. Avoid freeze / thaw cycles. Buffer: PBS with 0.02% sodium azide, 0.05% BSA, 50% glycerol, pH7.3.

Product Images



Western blot - Myosin light chain kinase Rabbit mAb (CAB3835)