

EIF4A2 Rabbit Polyclonal Antibody



CAB3849

Product Information

Size:

20uL, 50uL, 100uL, 200uL

Observed MW:

46kDa

Calculated MW:

46kDa

Applications:

WB IHC

Reactivity:

Human, Mouse, Rat

Antibody Information

Recommended dilutions:

WB 1:500 - 1:1000 IHC 1:50
- 1:200

Source:

Rabbit

Isotype:

IgG

Purification:

Affinity purification

Protein Background

Immunogen information

Gene ID:

1974

Uniprot

Q14240

Synonyms:

EIF4A2; BM-010; DDX2B; EIF4A; EIF4F; eIF-4A-II; eIF4A-II

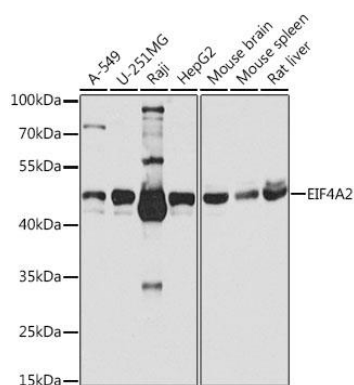
Immunogen:

Recombinant fusion protein containing a sequence corresponding to amino acids 1-270 of human EIF4A2 (NP_001958.2).

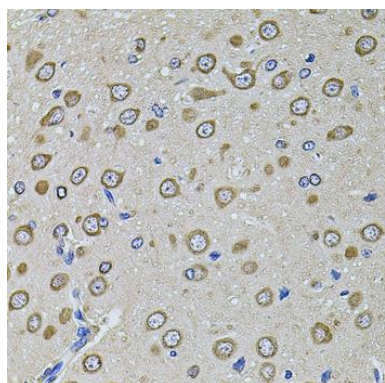
Storage:

Store at -20°C. Avoid freeze / thaw cycles. Buffer: PBS with 0.02% sodium azide, 50% glycerol, pH7.3.

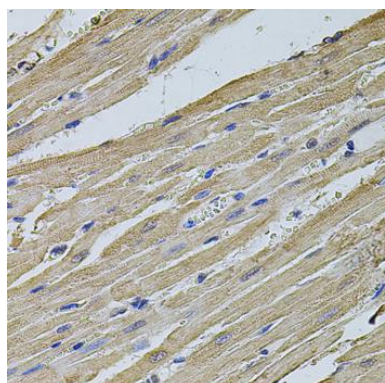
Product Images



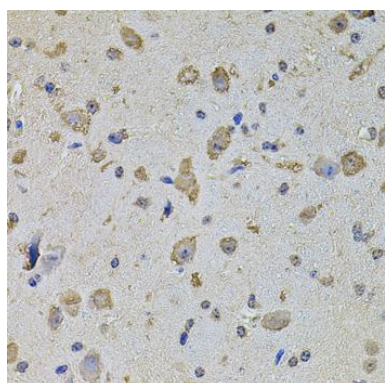
Western blot analysis of extracts of various cell lines, using EIF4A2 antibody (CAB3849) at 1:1000 dilution. Secondary antibody: HRP Goat Anti-Rabbit IgG (H+L) (CABS014) at 1:10000 dilution. Lysates/proteins: 25ug per lane. Blocking buffer: 3% nonfat dry milk in TBST. Detection: ECL Basic Kit (CABM00020). Exposure time: 10s.



Immunohistochemistry of paraffin-embedded rat brain using EIF4A2 antibody (CAB3849) at dilution of 1:100 (40x lens).



Immunohistochemistry of paraffin-embedded rat heart using EIF4A2 antibody (CAB3849) at dilution of 1:100 (40x lens).



Immunohistochemistry of paraffin-embedded mouse brain using EIF4A2 antibody (CAB3849) at dilution of 1:100 (40x lens).