

EXTL3 Rabbit Polyclonal Antibody



CAB3857

Product Information

Size:

20uL, 50uL, 100uL, 200uL

Observed MW:

105kDa

Calculated MW:

104kDa

Applications:

WB IHC

Reactivity:

Human, Mouse, Rat

Protein Background

This gene encodes a single-pass membrane protein which functions as a glycosyltransferase. The encoded protein catalyzes the transfer of N-acetylglucosamine to glycosaminoglycan chains. This reaction is important in heparin and heparan sulfate synthesis. Alternative splicing results in the multiple transcript variants.

Immunogen information

Gene ID:

2137

Uniprot

O43909

Synonyms:

EXTL3; BOTV; EXTL1L; EXTR1; REGR; RPR; ISDNA

Antibody Information

Recommended dilutions:

WB 1:200 - 1:2000 IHC 1:50
- 1:200

Source:

Rabbit

Isotype:

IgG

Purification:

Affinity purification

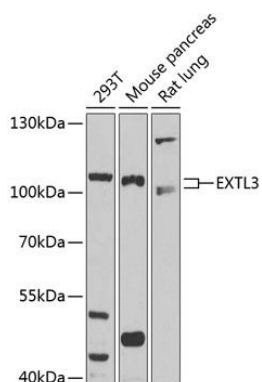
Immunogen:

Recombinant fusion protein containing a sequence corresponding to amino acids 52-220 of human EXTL3 (NP_001431.1).

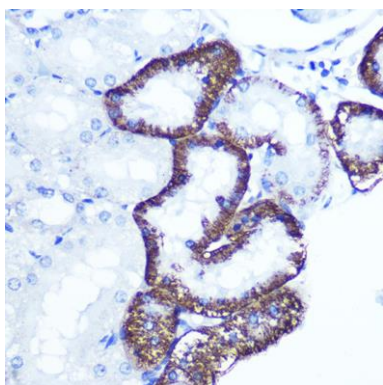
Storage:

Store at -20°C. Avoid freeze / thaw cycles. Buffer: PBS with 0.02% sodium azide, 50% glycerol, pH7.3.

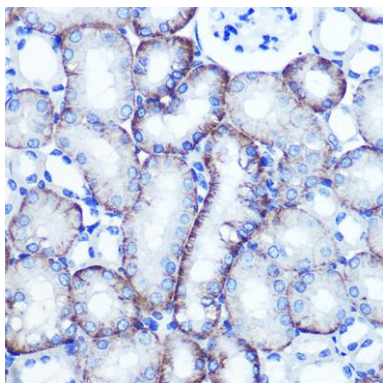
Product Images



Western blot analysis of extracts of various cell lines, using EXTL3 antibody (CAB3857) at 1:1000 dilution. Secondary antibody: HRP Goat Anti-Rabbit IgG (H+L) (CABS014) at 1:10000 dilution. Lysates/proteins: 25ug per lane. Blocking buffer: 3% nonfat dry milk in TBST. Detection: ECL Basic Kit (CABM00020). Exposure time: 5s.



Immunohistochemistry of paraffin-embedded rat kidney using EXTL3 Rabbit pAb (CAB3857) at dilution of 1:100 (40x lens).



Immunohistochemistry of paraffin-embedded mouse kidney using EXTL3 Rabbit pAb (CAB3857) at dilution of 1:100 (40x lens).