

FDXR Rabbit Polyclonal Antibody



CAB3860

Product Information

Size:

20uL, 50uL, 100uL, 200uL

Observed MW:

45kDa

Calculated MW:

48kDa/49kDa/52kDa/53kDa/
54kDa/57kDa/58kDa

Applications:

WB IHC

Reactivity:

Human, Mouse, Rat

Antibody Information

Recommended dilutions:

WB 1:500 - 1:2000 IHC
1:100 - 1:200

Source:

Rabbit

Isotype:

IgG

Purification:

Affinity purification

Protein Background

This gene encodes a mitochondrial flavoprotein that initiates electron transport for cytochromes P450 receiving electrons from NADPH. Multiple alternatively spliced transcript variants have been found for this gene.

Immunogen information

Gene ID:

2232

Uniprot

P22570

Synonyms:

FDXR; ADXR

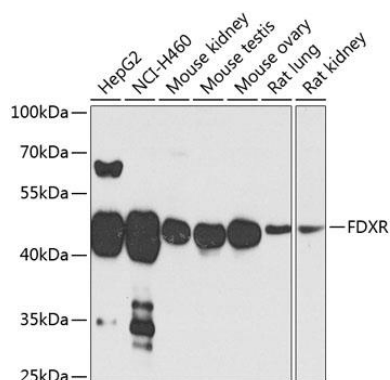
Immunogen:

Recombinant fusion protein containing a sequence corresponding to amino acids 252-491 of human FDXR (NP_077728.3).

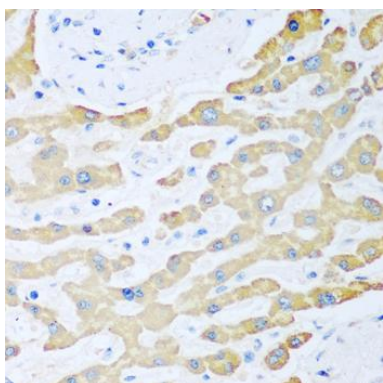
Storage:

Store at -20°C. Avoid freeze / thaw cycles. Buffer: PBS with 0.02% sodium azide, 50% glycerol, pH7.3.

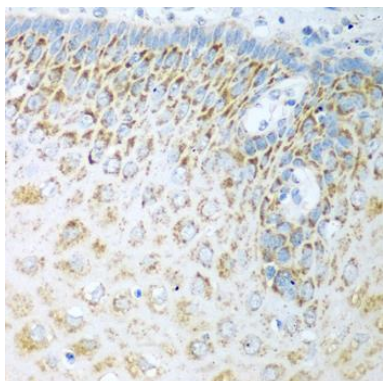
Product Images



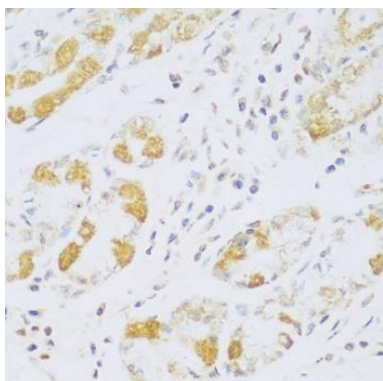
Western blot analysis of extracts of various cell lines, using FDXR antibody (CAB3860) at 1:1000 dilution. Secondary antibody: HRP Goat Anti-Rabbit IgG (H+L) (CABS014) at 1:10000 dilution. Lysates/proteins: 25ug per lane. Blocking buffer: 3% nonfat dry milk in TBST. Detection: ECL Enhanced Kit (CABM00021). Exposure time: 30s.



Immunohistochemistry of paraffin-embedded human liver cancer using FDXR antibody (CAB3860) at dilution of 1:100 (40x lens).



Immunohistochemistry of paraffin-embedded human esophagus using FDXR antibody (CAB3860) at dilution of 1:100 (40x lens).



Immunohistochemistry of paraffin-embedded human stomach using FDXR antibody (CAB3860) at dilution of 1:100 (40x lens).