

# FMO2 Rabbit Polyclonal Antibody



CAB3864

## Product Information

### Size:

20uL, 50uL, 100uL, 200uL

### Observed MW:

70kDa

### Calculated MW:

53kDa

### Applications:

WB

### Reactivity:

Human

## Protein Background

This gene encodes a flavin-containing monooxygenase family member. It is an NADPH-dependent enzyme that catalyzes the N-oxidation of some primary alkylamines through an N-hydroxylamine intermediate. However, some human populations contain an allele (FMO2\*2A) with a premature stop codon, resulting in a protein that is C-terminally-truncated, has no catalytic activity, and is likely degraded rapidly. This gene is found in a cluster with other related family members on chromosome 1. Alternative splicing results in multiple transcript variants.

## Immunogen information

### Gene ID:

2327

### Uniprot

Q99518

### Synonyms:

FMO2; FMO1B1

## Antibody Information

### Recommended dilutions:

WB 1:200 - 1:2000

### Source:

Rabbit

### Isotype:

IgG

### Purification:

Affinity purification

### Immunogen:

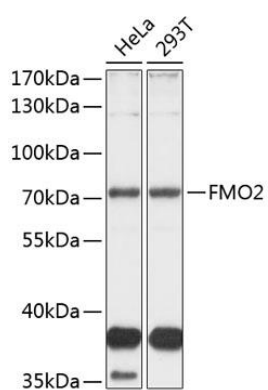
Recombinant fusion protein containing a sequence corresponding to amino acids 210-470 of human FMO2 (NP\_001451.2).

### Storage:

Store at -20°C. Avoid freeze / thaw cycles. Buffer: PBS with 0.02% sodium azide, 50% glycerol, pH7.3.

## Product Images

---



Western blot analysis of extracts of various cell lines, using FMO2 antibody (CAB3864) at 1:1000 dilution. Secondary antibody: HRP Goat Anti-Rabbit IgG (H+L) (CABS014) at 1:10000 dilution. Lysates/proteins: 25ug per lane. Blocking buffer: 3% nonfat dry milk in TBST. Detection: ECL Basic Kit (CABM00020). Exposure time: 30s.