

FUT6 Rabbit Polyclonal Antibody



CAB3868

Product Information

Size:

20uL, 50uL, 100uL, 200uL

Observed MW:

42kDa

Calculated MW:

41kDa/42kDa

Applications:

WB IHC

Reactivity:

Human

Protein Background

The protein encoded by this gene is a Golgi stack membrane protein that is involved in the creation of sialyl-Lewis X, an E-selectin ligand. Mutations in this gene are a cause of fucosyltransferase-6 deficiency. Two transcript variants encoding the same protein have been found for this gene.

Immunogen information

Gene ID:

2528

Uniprot

P51993

Synonyms:

FUT6; FCT3A; FT1A; Fuc-TVI; FucT-VI

Antibody Information

Recommended dilutions:

WB 1:500 - 1:2000 IHC

1:100 - 1:200

Source:

Rabbit

Isotype:

IgG

Purification:

Affinity purification

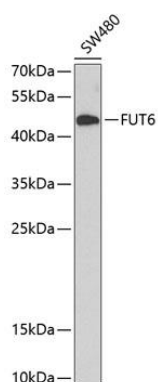
Immunogen:

Recombinant fusion protein containing a sequence corresponding to amino acids 170-359 of human FUT6 (NP_000141.1).

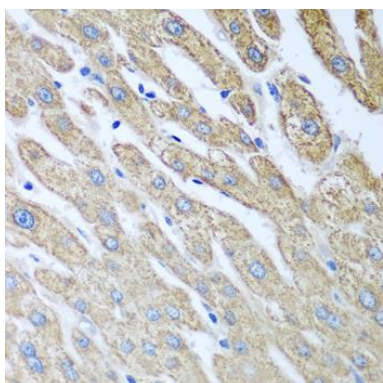
Storage:

Store at -20°C. Avoid freeze / thaw cycles. Buffer: PBS with 0.02% sodium azide, 50% glycerol, pH7.3.

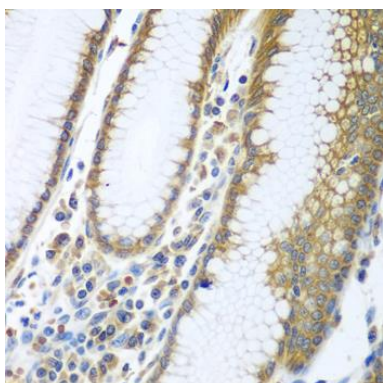
Product Images



Western blot analysis of extracts of SW480 cells, using FUT6 antibody (CAB3868) at 1:1000 dilution. Secondary antibody: HRP Goat Anti-Rabbit IgG (H+L) (CABS014) at 1:10000 dilution. Lysates/proteins: 25ug per lane. Blocking buffer: 3% nonfat dry milk in TBST. Detection: ECL Basic Kit (CABM00020). Exposure time: 90s.



Immunohistochemistry of paraffin-embedded human liver using FUT6 antibody (CAB3868) at dilution of 1:100 (40x lens).



Immunohistochemistry of paraffin-embedded human stomach using FUT6 antibody (CAB3868) at dilution of 1:100 (40x lens).