

Rad50 Rabbit Monoclonal Antibody



CAB3869

Product Information

Size:

20uL, 50uL, 100uL, 200uL

Observed MW:

154kDa

Calculated MW:

154kDa

Applications:

WB

Reactivity:

Human, Mouse, Rat

Antibody Information

Recommended dilutions:

WB 1:500 - 1:2000

Source:

Rabbit

Isotype:

IgG

Purification:

Affinity purification

Protein Background

The protein encoded by this gene is highly similar to *Saccharomyces cerevisiae* Rad50, a protein involved in DNA double-strand break repair. This protein forms a complex with MRE11 and NBS1. The protein complex binds to DNA and displays numerous enzymatic activities that are required for nonhomologous joining of DNA ends. This protein, cooperating with its partners, is important for DNA double-strand break repair, cell cycle checkpoint activation, telomere maintenance, and meiotic recombination. Knockout studies of the mouse homolog suggest this gene is essential for cell growth and viability. Mutations in this gene are the cause of Nijmegen breakage syndrome-like disorder.[provided by RefSeq, Apr 2010]

Immunogen information

Gene ID:

10111

Uniprot

Q92878

Synonyms:

NBSLD; RAD502; hRad50

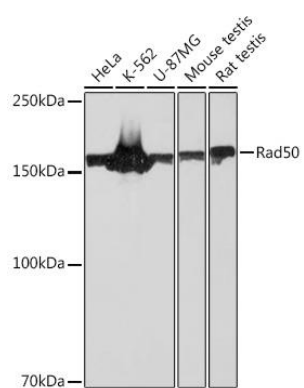
Immunogen:

A synthesized peptide derived from human Rad50

Storage:

Store at -20°C. Avoid freeze / thaw cycles. Buffer: PBS with 0.02% sodium azide, 0.05% BSA, 50% glycerol, pH7.3.

Product Images



Western blot - Rad50 Rabbit mAb (CAB3869)