

GBP1 Rabbit Polyclonal Antibody



CAB3879

Product Information

Size:

20uL, 50uL, 100uL, 200uL

Observed MW:

68kDa

Calculated MW:

67kDa

Applications:

WB IHC

Reactivity:

Human, Mouse

Protein Background

Guanylate binding protein expression is induced by interferon. Guanylate binding proteins are characterized by their ability to specifically bind guanine nucleotides (GMP, GDP, and GTP) and are distinguished from the GTP-binding proteins by the presence of 2 binding motifs rather than 3.

Immunogen information

Gene ID:

2633

Uniprot

P32455

Synonyms:

GBP1

Antibody Information

Recommended dilutions:

WB 1:500 - 1:2000 IHC 1:20
- 1:200

Source:

Rabbit

Isotype:

IgG

Purification:

Affinity purification

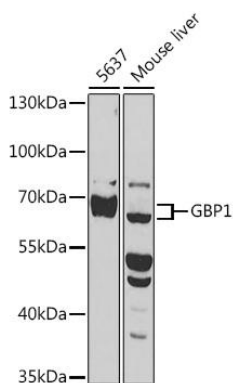
Immunogen:

Recombinant fusion protein containing a sequence corresponding to amino acids 383-592 of human GBP1 (NP_002044.2).

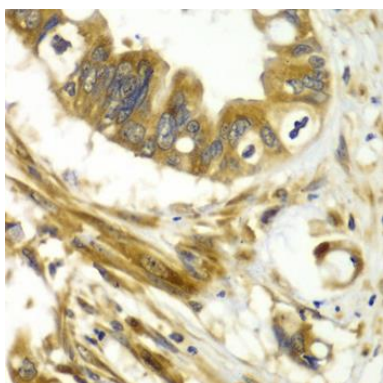
Storage:

Store at -20°C. Avoid freeze / thaw cycles. Buffer: PBS with 0.02% sodium azide, 50% glycerol, pH7.3.

Product Images



Western blot analysis of extracts of various cell lines, using GBP1 antibody (CAB3879) at 1:1000 dilution. Secondary antibody: HRP Goat Anti-Rabbit IgG (H+L) (CABS014) at 1:10000 dilution. Lysates/proteins: 25ug per lane. Blocking buffer: 3% nonfat dry milk in TBST. Detection: ECL Basic Kit (CABM00020). Exposure time: 10s.



Immunohistochemistry of paraffin-embedded human liver cancer using GBP1 antibody (CAB3879) at dilution of 1:100 (40x lens).