

GFPT1 Rabbit Polyclonal Antibody



CAB3882

Product Information

Size:

20uL, 50uL, 100uL, 200uL

Observed MW:

98kDa

Calculated MW:

76kDa/78kDa

Applications:

WB IHC

Reactivity:

Human, Mouse, Rat

Protein Background

This gene encodes the first and rate-limiting enzyme of the hexosamine pathway and controls the flux of glucose into the hexosamine pathway. The product of this gene catalyzes the formation of glucosamine 6-phosphate.

Immunogen information

Gene ID:

2673

Uniprot

Q06210

Synonyms:

GFPT1; CMS12; CMSTA1; GFA; GFAT; GFAT 1; GFAT1; GFAT1m;
GFPT; GFPT1L; MSLG

Antibody Information

Recommended dilutions:

WB 1:200 - 1:2000 IHC 1:50
- 1:200

Source:

Rabbit

Isotype:

IgG

Purification:

Affinity purification

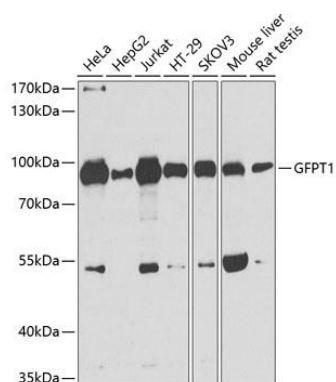
Immunogen:

Recombinant fusion protein containing a sequence corresponding to amino acids 1-150 of human GFPT1 (NP_002047.2).

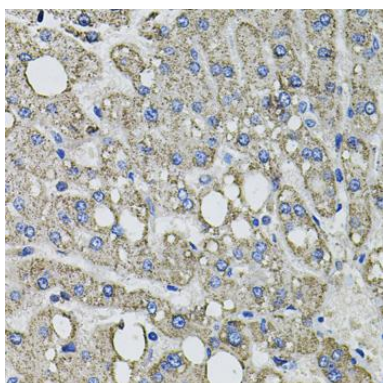
Storage:

Store at -20°C. Avoid freeze / thaw cycles. Buffer: PBS with 0.02% sodium azide, 50% glycerol, pH7.3.

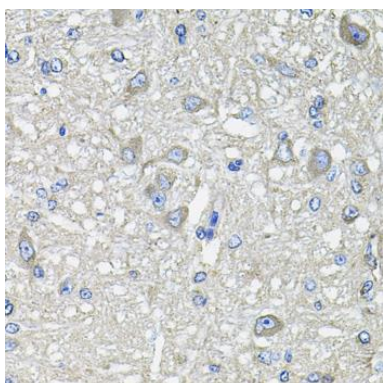
Product Images



Western blot analysis of extracts of various cell lines, using GFPT1 antibody (CAB3882) at 1:1000 dilution. Secondary antibody: HRP Goat Anti-Rabbit IgG (H+L) (CABS014) at 1:10000 dilution. Lysates/proteins: 25ug per lane. Blocking buffer: 3% nonfat dry milk in TBST. Detection: ECL Basic Kit (CABM00020). Exposure time: 90s.



Immunohistochemistry of paraffin-embedded human liver damage using GFPT1 antibody (CAB3882) at dilution of 1:100 (40x lens).



Immunohistochemistry of paraffin-embedded rat brain using GFPT1 antibody (CAB3882) at dilution of 1:100 (40x lens).