

GLS Rabbit Polyclonal Antibody



CAB3885

Product Information

Size:

20uL, 50uL, 100uL, 200uL

Observed MW:

65-73kDa

Calculated MW:

17kDa/65kDa/73kDa

Applications:

WB IHC

Reactivity:

Human, Mouse, Rat

Protein Background

This gene encodes the K-type mitochondrial glutaminase. The encoded protein is an phosphate-activated amidohydrolase that catalyzes the hydrolysis of glutamine to glutamate and ammonia. This protein is primarily expressed in the brain and kidney plays an essential role in generating energy for metabolism, synthesizing the brain neurotransmitter glutamate and maintaining acid-base balance in the kidney. Alternate splicing results in multiple transcript variants.

Immunogen information

Gene ID:

2744

Uniprot

O94925

Synonyms:

GLS; AAD20; GAC; GAM; GLS1; KGA

Antibody Information

Recommended dilutions:

WB 1:500 - 1:2000 IHC 1:50 - 1:200

Source:

Rabbit

Isotype:

IgG

Purification:

Affinity purification

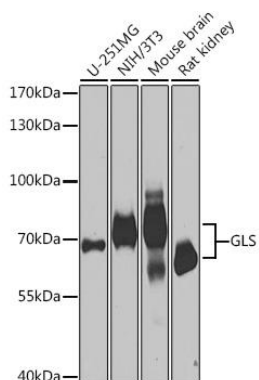
Immunogen:

Recombinant fusion protein containing a sequence corresponding to amino acids 610-669 of human GLS (NP_055720.3).

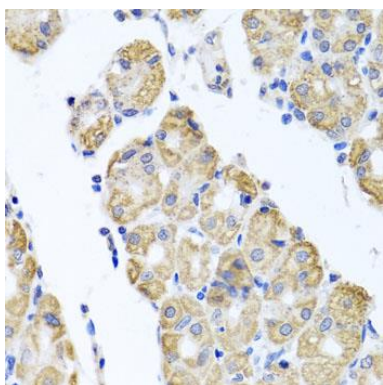
Storage:

Store at -20°C. Avoid freeze / thaw cycles. Buffer: PBS with 0.02% sodium azide, 50% glycerol, pH7.3.

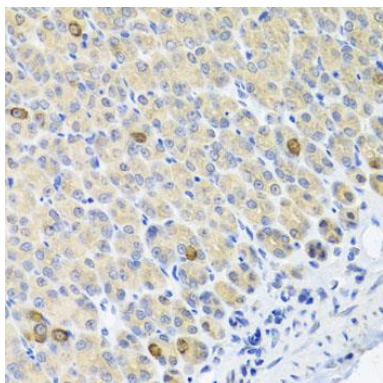
Product Images



Western blot analysis of extracts of various cell lines, using GLS antibody (CAB3885) at 1:1000 dilution. Secondary antibody: HRP Goat Anti-Rabbit IgG (H+L) (CABS014) at 1:10000 dilution. Lysates/proteins: 25ug per lane. Blocking buffer: 3% nonfat dry milk in TBST. Detection: ECL Basic Kit (CABM00020). Exposure time: 30s.



Immunohistochemistry of paraffin-embedded human stomach using GLS antibody (CAB3885) at dilution of 1:100 (40x lens).



Immunohistochemistry of paraffin-embedded mouse stomach using GLS antibody (CAB3885) at dilution of 1:100 (40x lens).