

SAM68 Rabbit Monoclonal Antibody



CAB3886

Product Information

Size:

20uL, 50uL, 100uL, 200uL

Observed MW:

68KDa

Calculated MW:

68 kDa

Applications:

WB IHC IF

Reactivity:

Human, Mouse, Rat

Protein Background

This gene encodes a member of the K homology domain-containing, RNA-binding, signal transduction-associated protein family. The encoded protein appears to have many functions and may be involved in a variety of cellular processes, including alternative splicing, cell cycle regulation, RNA 3'-end formation, tumorigenesis, and regulation of human immunodeficiency virus gene expression. Alternative splicing results in multiple transcript variants. [provided by RefSeq, Dec 2012]

Immunogen information

Gene ID:

10657

Uniprot

Q07666

Synonyms:

Sam68; p62; p68

Antibody Information

Recommended dilutions:

WB 1:500 - 1:2000 IHC
1:50 - 1:200 IF 1:50 - 1:200

Source:

Rabbit

Isotype:

IgG

Purification:

Affinity purification

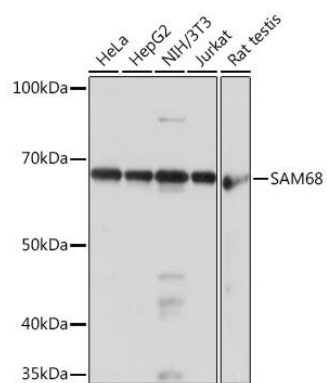
Immunogen:

A synthesized peptide derived from human SAM68

Storage:

Store at -20°C. Avoid freeze / thaw cycles. Buffer: PBS with 0.02% sodium azide, 0.05% BSA, 50% glycerol, pH7.3.

Product Images



Western blot - SAM68 Rabbit mAb (CAB3886)