

# FGF21 Rabbit Monoclonal Antibody



CAB3908

---

## Product Information

### Size:

20uL, 50uL, 100uL, 200uL

### Observed MW:

20KDa

### Calculated MW:

22kDa

### Applications:

WB IHC

### Reactivity:

Human, Mouse, Rat

## Protein Background

This gene encodes a member of the fibroblast growth factor (FGF) family. FGF family members possess broad mitogenic and cell survival activities and are involved in a variety of biological processes. This protein is a secreted endocrine factor that functions as a major metabolic regulator. The encoded protein stimulates the uptake of glucose in adipose tissue. [provided by RefSeq, Mar 2016]

## Immunogen information

### Gene ID:

26291

### Uniprot

Q9NSA1

### Synonyms:

## Antibody Information

### Recommended dilutions:

WB 1:500 - 1:2000 IHC 1:50  
- 1:200

### Source:

Rabbit

### Isotype:

IgG

### Purification:

Affinity purification

### Immunogen:

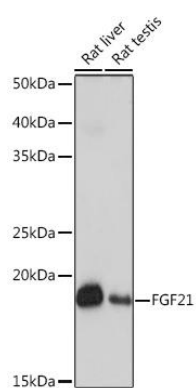
A synthesized peptide derived from human FGF21

### Storage:

Store at -20°C. Avoid freeze / thaw cycles. Buffer: PBS with 0.02% sodium azide, 0.05% BSA, 50% glycerol, pH7.3.

## Product Images

---



Western blot - FGF21 Rabbit mAb (CAB3908)