

HMGCS1 Rabbit Polyclonal Antibody



CAB3916

Product Information

Size:

20uL, 50uL, 100uL, 200uL

Observed MW:

57kDa

Calculated MW:

57kDa

Applications:

WB IF

Reactivity:

Human, Mouse, Rat

Antibody Information

Recommended dilutions:

WB 1:1000 - 1:2000 IF 1:50
- 1:200

Source:

Rabbit

Isotype:

IgG

Purification:

Affinity purification

Protein Background

Immunogen information

Gene ID:

3157

Uniprot

Q01581

Synonyms:

HMGCS1; HMGCS

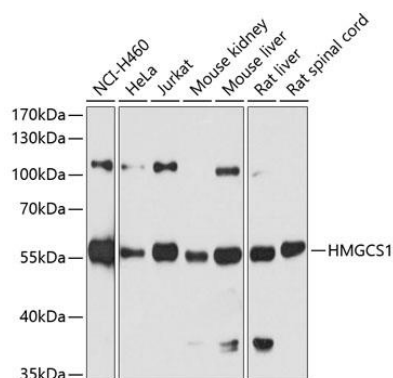
Immunogen:

Recombinant fusion protein containing a sequence corresponding to amino acids 241-520 of human HMGCS1 (NP_002121.4).

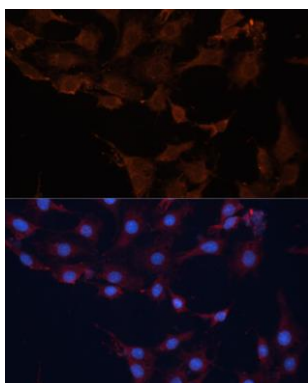
Storage:

Store at -20°C. Avoid freeze / thaw cycles. Buffer: PBS with 0.02% sodium azide, 50% glycerol, pH7.3.

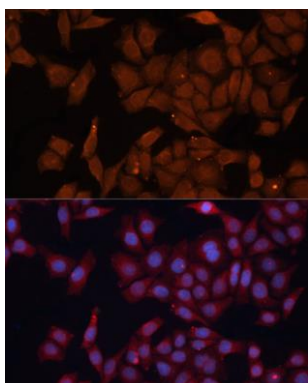
Product Images



Western blot analysis of extracts of various cell lines, using HMGCS1 antibody (CAB3916) at 1:7000 dilution. Secondary antibody: HRP Goat Anti-Rabbit IgG (H+L) (CABS014) at 1:10000 dilution. Lysates/proteins: 25ug per lane. Blocking buffer: 3% nonfat dry milk in TBST. Detection: ECL Basic Kit (CABM00020). Exposure time: 30s.



Immunofluorescence analysis of C6 cells using HMGCS1 Polyclonal Antibody (CAB3916) at dilution of 1:100 (40x lens). Blue: DAPI for nuclear staining.



Immunofluorescence analysis of HeLa cells using HMGCS1 Polyclonal Antibody (CAB3916) at dilution of 1:100 (40x lens). Blue: DAPI for nuclear staining.