

# IFIT3 Rabbit Polyclonal Antibody



CAB3924

## Product Information

### Size:

20uL, 50uL, 100uL, 200uL

### Observed MW:

60kDa

### Calculated MW:

47kDa

### Applications:

WB IHC IF

### Reactivity:

Human, Mouse, Rat

## Antibody Information

### Recommended dilutions:

WB 1:500 - 1:1000 IHC

1:100 - 1:200 IF 1:50 -

1:200

### Source:

Rabbit

### Isotype:

IgG

### Purification:

Affinity purification

## Protein Background

### Immunogen information

#### Gene ID:

15959

#### Uniprot

O14879

#### Synonyms:

IFIT3; CIG-49; GARG-49; IFI60; IFIT4; IRG2; ISG60; P60; RIG-G; cig41

#### Immunogen:

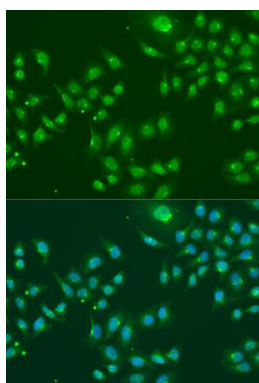
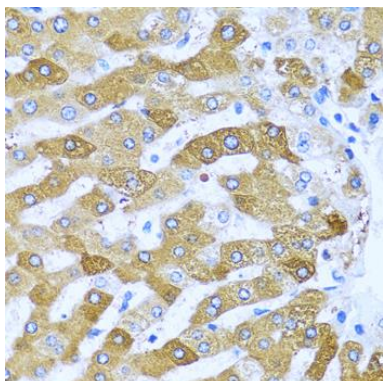
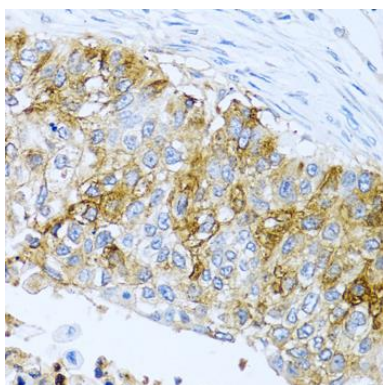
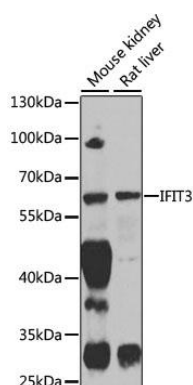
Recombinant fusion protein containing a sequence corresponding to amino acids 128-331 of mouse IFIT3 (NP\_034631.1).

#### Storage:

Store at -20°C. Avoid freeze / thaw cycles. Buffer: PBS with 0.02% sodium azide, 50% glycerol, pH7.3.

## Product Images

---



Western blot analysis of extracts of various cell lines, using IFIT3 antibody (CAB3924) at 1:1000 dilution. Secondary antibody: HRP Goat Anti-Rabbit IgG (H+L) (CABS014) at 1:10000 dilution. Lysates/proteins: 25ug per lane. Blocking buffer: 3% nonfat dry milk in TBST. Detection: ECL Enhanced Kit (CABM00021). Exposure time: 60s.

Immunohistochemistry of paraffin-embedded human lung cancer using IFIT3 antibody (CAB3924) at dilution of 1:100 (40x lens).

Immunohistochemistry of paraffin-embedded human liver using IFIT3 antibody (CAB3924) at dilution of 1:100 (40x lens).

Immunofluorescence analysis of U2OS cells using IFIT3 antibody (CAB3924) at dilution of 1:100. Blue: DAPI for nuclear staining.