

ITPKB Rabbit Polyclonal Antibody



CAB3929

Product Information

Size:

20uL, 50uL, 100uL, 200uL

Observed MW:

102kDa

Calculated MW:

67kDa/102kDa

Applications:

WB IHC

Reactivity:

Human, Mouse, Rat

Protein Background

The protein encoded by this protein regulates inositol phosphate metabolism by phosphorylation of second messenger inositol 1, 4, 5-trisphosphate to Ins(1, 3, 4, 5)P4. The activity of this encoded protein is responsible for regulating the levels of a large number of inositol polyphosphates that are important in cellular signaling. Both calcium/calmodulin and protein phosphorylation mechanisms control its activity.

Immunogen information

Gene ID:

3707

Uniprot

P27987

Synonyms:

ITPKB; IP3-3KB; IP3K; IP3K-B; IP3KB; PIG37

Antibody Information

Recommended dilutions:

WB 1:200 - 1:2000 IHC 1:20 - 1:200

Source:

Rabbit

Isotype:

IgG

Purification:

Affinity purification

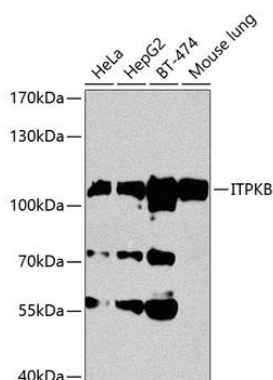
Immunogen:

Recombinant fusion protein containing a sequence corresponding to amino acids 1-260 of human ITPKB (NP_002212.3).

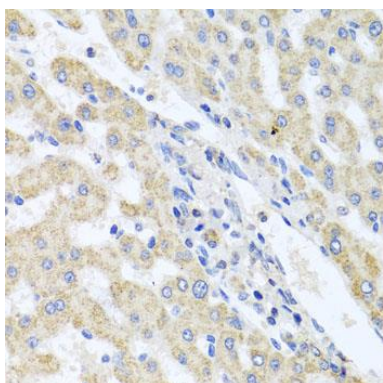
Storage:

Store at -20°C. Avoid freeze / thaw cycles. Buffer: PBS with 0.02% sodium azide, 50% glycerol, pH7.3.

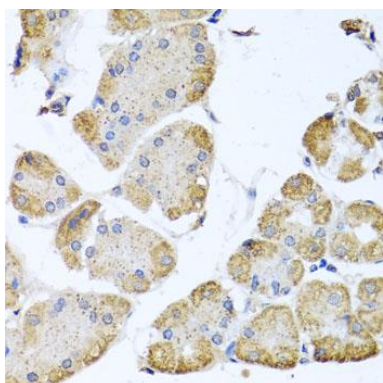
Product Images



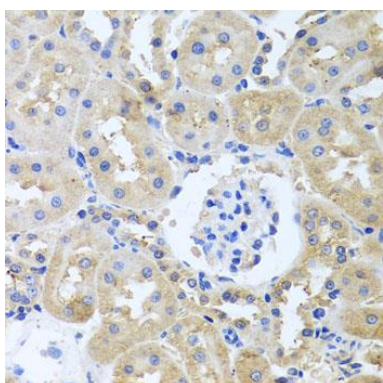
Western blot analysis of extracts of various cell lines, using ITPKB antibody (CAB3929) at 1:1000 dilution. Secondary antibody: HRP Goat Anti-Rabbit IgG (H+L) (CABS014) at 1:10000 dilution. Lysates/proteins: 25ug per lane. Blocking buffer: 3% nonfat dry milk in TBST. Detection: ECL Basic Kit (CABM00020). Exposure time: 60s.



Immunohistochemistry of paraffin-embedded human liver tissue using ITPKB antibody (CAB3929) at dilution of 1:100 (40x lens).



Immunohistochemistry of paraffin-embedded human stomach tissue using ITPKB antibody (CAB3929) at dilution of 1:100 (40x lens).



Immunohistochemistry of paraffin-embedded rat kidney tissue using ITPKB antibody (CAB3929) at dilution of 1:100 (40x lens).