

SGK1 Rabbit Monoclonal Antibody



CAB3936

Product Information

Size:

20uL, 50uL, 100uL, 200uL

Observed MW:

60KDa

Calculated MW:

57kDa

Applications:

WB

Reactivity:

Human, Mouse

Antibody Information

Recommended dilutions:

WB 1:500 - 1:2000

Source:

Rabbit

Isotype:

IgG

Purification:

Affinity purification

Protein Background

This gene encodes a serine/threonine protein kinase that plays an important role in cellular stress response. This kinase activates certain potassium, sodium, and chloride channels, suggesting an involvement in the regulation of processes such as cell survival, neuronal excitability, and renal sodium excretion. High levels of expression of this gene may contribute to conditions such as hypertension and diabetic nephropathy. Several alternatively spliced transcript variants encoding different isoforms have been noted for this gene. [provided by RefSeq, Jan 2009]

Immunogen information

Gene ID:

6446

Uniprot

O00141

Synonyms:

SGK

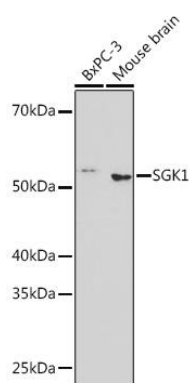
Immunogen:

A synthesized peptide derived from human SGK1

Storage:

Store at -20°C. Avoid freeze / thaw cycles. Buffer: PBS with 0.02% sodium azide, 0.05% BSA, 50% glycerol, pH7.3.

Product Images



Western blot - SGK1 Rabbit mAb (CAB3936)