

NBR1 Rabbit Polyclonal Antibody



CAB3949

Product Information

Size:

50uL, 100uL

Observed MW:

120KDa

Calculated MW:

103kDa/107kDa

Applications:

WB IHC IF IP

Reactivity:

Human, Mouse, Rat, Monkey

Antibody Information

Recommended dilutions:

WB 1:500 - 1:2000 IHC 1:50
- 1:200 IF 1:50 - 1:100 IP
1:20 - 1:50

Source:

Rabbit

Isotype:

IgG

Purification:

Affinity purification

Protein Background

The protein encoded by this gene was originally identified as an ovarian tumor antigen monitored in ovarian cancer. The encoded protein contains a B-box/coiled-coil motif, which is present in many genes with transformation potential. It functions as a specific autophagy receptor for the selective autophagic degradation of peroxisomes by forming intracellular inclusions with ubiquitylated autophagic substrates. This gene is located on a region of chromosome 17q21.1 that is in close proximity to the BRCA1 tumor suppressor gene. Alternative splicing of this gene results in multiple transcript variants.

Immunogen information

Gene ID:

4077

Uniprot

Q14596

Synonyms:

NBR1; 1A1-3B; IAI3B; M17S2; MIG19

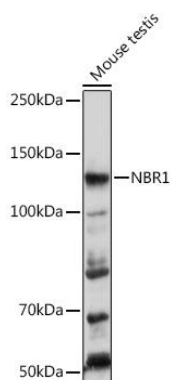
Immunogen:

Recombinant protein of human NBR1

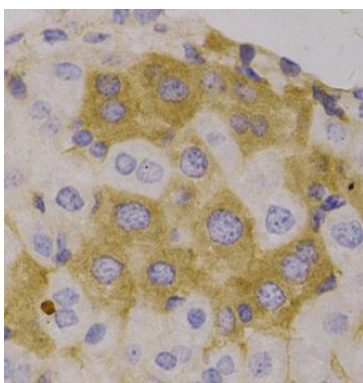
Storage:

Store at -20°C. Avoid freeze / thaw cycles. Buffer: PBS with 0.02% sodium azide, 50% glycerol, pH7.3.

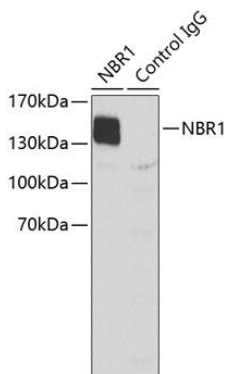
Product Images



Western blot analysis of extracts of Mouse testis, using NBR1 Rabbit pAb (CAB3949) at 1:1000 dilution. Secondary antibody: HRP Goat Anti-Rabbit IgG (H+L) (CABS014) at 1:10000 dilution. Lysates/proteins: 25ug per lane. Blocking buffer: 3% nonfat dry milk in TBST. Detection: ECL Basic Kit (CABM00020). Exposure time: 30s.



Immunohistochemistry of paraffin-embedded human liver, using NBR1 antibody (CAB3949).



Immunoprecipitation analysis of extracts of K562 cells, using NBR1 antibody (CAB3949).