

MOCS2 Rabbit Polyclonal Antibody



CAB3965

Product Information

Size:

20uL, 50uL, 100uL, 200uL

Observed MW:

13kDa

Calculated MW:

9kDa

Applications:

WB

Reactivity:

Mouse

Antibody Information

Recommended dilutions:

WB 1:500 - 1:2000

Source:

Rabbit

Isotype:

IgG

Purification:

Affinity purification

Protein Background

Eukaryotic molybdoenzymes use a unique molybdenum cofactor (MoCo) consisting of a pterin, termed molybdopterin, and the catalytically active metal molybdenum. MoCo is synthesized from precursor Z by the heterodimeric enzyme molybdopterin synthase. The large and small subunits of molybdopterin synthase are both encoded from this gene by overlapping open reading frames. The proteins were initially thought to be encoded from a bicistronic transcript. They are now thought to be encoded from monocistronic transcripts. Alternatively spliced transcripts have been found for this locus that encode the large and small subunits.

Immunogen information

Gene ID:

4338

Uniprot

O96007/O96033

Synonyms:

MOCS2; MCBPE; MOCO1; MOCODB; MPTS

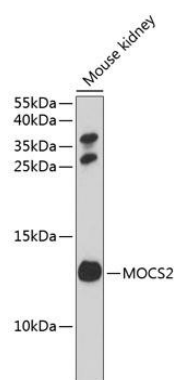
Immunogen:

Recombinant fusion protein containing a sequence corresponding to amino acids 1-188 of human MOCS2 (NP_004522.1).

Storage:

Store at -20°C. Avoid freeze / thaw cycles. Buffer: PBS with 0.02% sodium azide, 50% glycerol, pH7.3.

Product Images



Western blot analysis of extracts of mouse kidney, using MOCS2 antibody (CAB3965) at 1:1000 dilution. Secondary antibody: HRP Goat Anti-Rabbit IgG (H+L) (CABS014) at 1:10000 dilution. Lysates/proteins: 25ug per lane. Blocking buffer: 3% nonfat dry milk in TBST. Detection: ECL Basic Kit (CABM00020). Exposure time: 90s.