

MOV10 Rabbit Polyclonal Antibody



CAB3966

Product Information

Size:

20uL, 50uL, 100uL, 200uL

Observed MW:

113kDa

Calculated MW:

6kDa/101kDa/113kDa

Applications:

WB IF

Reactivity:

Human, Mouse, Rat

Antibody Information

Recommended dilutions:

WB 1:1000 - 1:2000 IF 1:50
- 1:200

Source:

Rabbit

Isotype:

IgG

Purification:

Affinity purification

Protein Background

Immunogen information

Gene ID:

4343

Uniprot

Q9HCE1

Synonyms:

MOV10; fSAP113; gb110

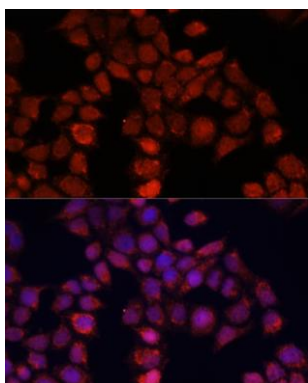
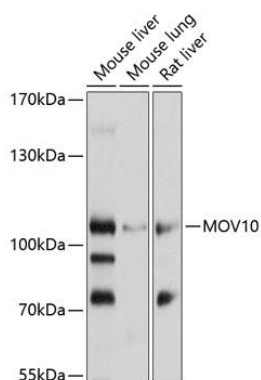
Immunogen:

Recombinant fusion protein containing a sequence corresponding to amino acids 1-310 of human MOV10 (NP_066014.1).

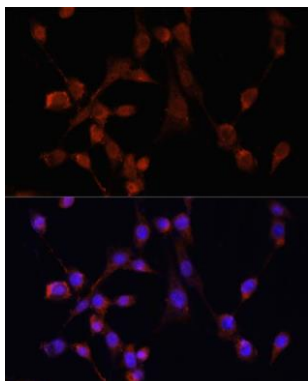
Storage:

Store at -20°C. Avoid freeze / thaw cycles. Buffer: PBS with 0.02% sodium azide, 50% glycerol, pH7.3.

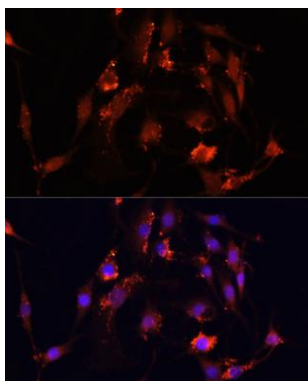
Product Images



Immunofluorescence analysis of HeLa cells using mov10 antibody (CAB3966) at dilution of 1:100. Blue: DAPI for nuclear staining.



Immunofluorescence analysis of NIH/3T3 cells using mov10 antibody (CAB3966) at dilution of 1:100. Blue: DAPI for nuclear staining.



Immunofluorescence analysis of PC12 cells using mov10 antibody (CAB3966) at dilution of 1:100. Blue: DAPI for nuclear staining.