

TRAP1 Rabbit Monoclonal Antibody



CAB3971

Product Information

Size:

20uL, 50uL, 100uL, 200uL

Observed MW:

75KDa

Calculated MW:

75kDa

Applications:

WB

Reactivity:

Human, Mouse

Protein Background

This gene encodes a mitochondrial chaperone protein that is member of the heat shock protein 90 (HSP90) family. The encoded protein has ATPase activity and interacts with tumor necrosis factor type I. This protein may function in regulating cellular stress responses. Alternate splicing results in multiple transcript variants. [provided by RefSeq, Jan 2013]

Immunogen information

Gene ID:

10131

Uniprot

Q12931

Synonyms:

HSP 75; HSP75; HSP90L; TRAP-1

Antibody Information

Recommended dilutions:

WB 1:500 - 1:2000

Source:

Rabbit

Isotype:

IgG

Purification:

Affinity purification

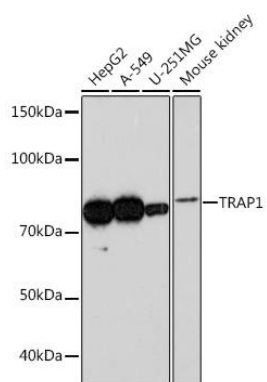
Immunogen:

A synthesized peptide derived from human TRAP1

Storage:

Store at -20°C. Avoid freeze / thaw cycles. Buffer: PBS with 0.02% sodium azide, 0.05% BSA, 50% glycerol, pH7.3.

Product Images



Western blot - TRAP1 Rabbit mAb (CAB3971)