

RAB4A Rabbit Monoclonal Antibody



CAB3979

Product Information

Size:

20uL, 50uL, 100uL, 200uL

Observed MW:

25KDa

Calculated MW:

24kDa

Applications:

WB

Reactivity:

Human, Mouse

Protein Background

This gene is a member of the largest group in the Ras superfamily of small GTPases, which regulate membrane trafficking. The encoded protein is associated with early endosomes and is involved in their sorting and recycling. The protein also plays a role in regulating the recycling of receptors from endosomes to the plasma membrane. Alternatively spliced transcript variants have been observed for this gene. [provided by RefSeq, Dec 2012]

Immunogen information

Gene ID:

5867

Uniprot

P20338

Synonyms:

HRES-1; HRES-1/RAB4; HRES1; RAB4

Antibody Information

Recommended dilutions:

WB 1:500 - 1:2000

Source:

Rabbit

Isotype:

IgG

Purification:

Affinity purification

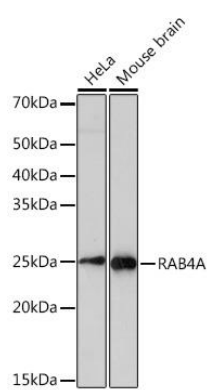
Immunogen:

A synthesized peptide derived from human RAB4A

Storage:

Store at -20°C. Avoid freeze / thaw cycles. Buffer: PBS with 0.02% sodium azide, 0.05% BSA, 50% glycerol, pH7.3.

Product Images



Western blot - RAB4A Rabbit mAb (CAB3979)