

NDUFB10 Rabbit Polyclonal Antibody



CAB3982

Product Information

Size:

20uL, 50uL, 100uL, 200uL

Observed MW:

21kDa

Calculated MW:

20kDa

Applications:

WB IHC IP

Reactivity:

Human, Mouse, Rat

Antibody Information

Recommended dilutions:

WB 1:500 - 1:2000 IHC 1:50
- 1:100 IP 1:50 - 1:100

Source:

Rabbit

Isotype:

IgG

Purification:

Affinity purification

Protein Background

Immunogen information

Gene ID:

4716

Uniprot

O96000

Synonyms:

NDUFB10; PDSW

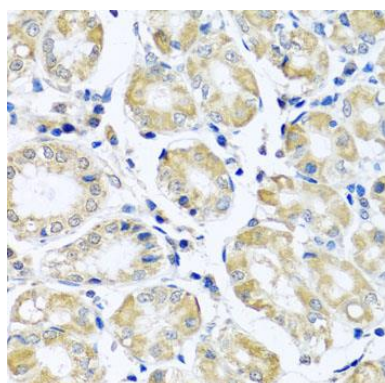
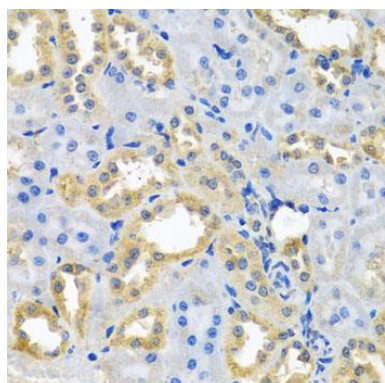
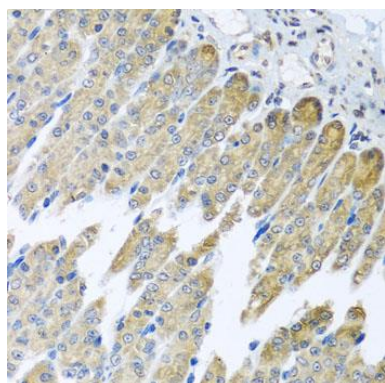
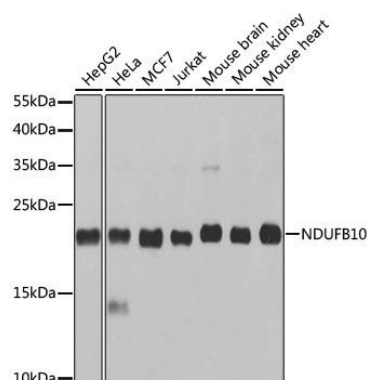
Immunogen:

Recombinant fusion protein containing a sequence corresponding to amino acids 1-172 of human NDUFB10 (NP_004539.1).

Storage:

Store at -20°C. Avoid freeze / thaw cycles. Buffer: PBS with 0.02% sodium azide, 50% glycerol, pH7.3.

Product Images



Western blot analysis of extracts of various cell lines, using NDUFB10 antibody (CAB3982) at 1:1000 dilution. Secondary antibody: HRP Goat Anti-Rabbit IgG (H+L) (CABS014) at 1:10000 dilution. Lysates/proteins: 25ug per lane. Blocking buffer: 3% nonfat dry milk in TBST. Detection: ECL Basic Kit (CABM00020). Exposure time: 10s.

Immunohistochemistry of paraffin-embedded mouse stomach using NDUFB10 antibody (CAB3982) at dilution of 1:100 (40x lens).

Immunohistochemistry of paraffin-embedded rat kidney using NDUFB10 antibody (CAB3982) at dilution of 1:100 (40x lens).

Immunohistochemistry of paraffin-embedded human stomach using NDUFB10 antibody (CAB3982) at dilution of 1:100 (40x lens).