

# [KO Validated] NUCB1 Rabbit Polyclonal Antibody

## CAB3994



### Product Information

**Size:**

20uL, 50uL, 100uL, 200uL

**Observed MW:**

60kDa

**Calculated MW:**

53kDa

**Applications:**

WB IHC IF

**Reactivity:**

Human, Mouse, Rat

### Protein Background

This gene encodes a member of a small calcium-binding EF-hand protein family. The encoded protein is thought to have a key role in Golgi calcium homeostasis and Ca(2+)-regulated signal transduction events.

### Immunogen information

**Gene ID:**

4924

**Uniprot**

Q02818

**Synonyms:**

NUCB1; CALNUC; NUC

### Antibody Information

**Recommended dilutions:**

WB 1:500 - 1:2000 IHC 1:50  
- 1:100 IF 1:50 - 1:100

**Source:**

Rabbit

**Isotype:**

IgG

**Purification:**

Affinity purification

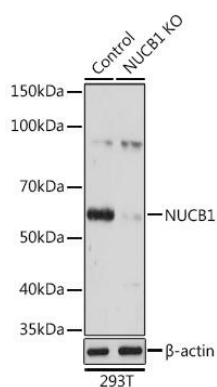
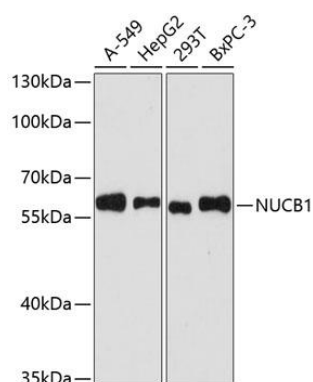
**Immunogen:**

Recombinant fusion protein containing a sequence corresponding to amino acids 302-461 of human NUCB1 (NP\_006175.2).

**Storage:**

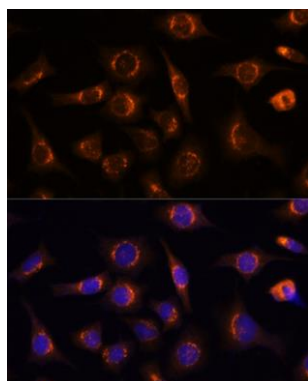
Store at -20°C. Avoid freeze / thaw cycles. Buffer: PBS with 0.02% sodium azide, 50% glycerol, pH7.3.

## Product Images

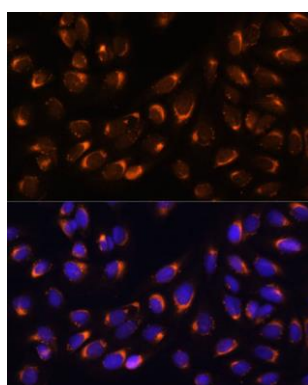


Western blot analysis of extracts of various cell lines, using NUCB1 antibody (CAB3994) at 1:3000 dilution. Secondary antibody: HRP Goat Anti-Rabbit IgG (H+L) (CABS014) at 1:10000 dilution. Lysates/proteins: 25ug per lane. Blocking buffer: 3% nonfat dry milk in TBST. Detection: ECL Basic Kit (CABM00020). Exposure time: 90s.

Western blot analysis of extracts from normal (control) and NUCB1 knockout (KO) 293T cells, using NUCB1 antibody (CAB3994) at 1:3000 dilution. Secondary antibody: HRP Goat Anti-Rabbit IgG (H+L) (CABS014) at 1:10000 dilution. Lysates/proteins: 25ug per lane. Blocking buffer: 3% nonfat dry milk in TBST. Detection: ECL Basic Kit (CABM00020). Exposure time: 3s.



Immunofluorescence analysis of L929 cells using NUCB1 Polyclonal Antibody (CAB3994) at dilution of 1:100 (40x lens). Blue: DAPI for nuclear staining.



Immunofluorescence analysis of U-2 OS cells using NUCB1 Polyclonal Antibody (CAB3994) at dilution of 1:100 (40x lens). Blue: DAPI for nuclear staining.