

PMM2 Rabbit Polyclonal Antibody



CAB4026

Product Information

Size:

20uL, 50uL, 100uL, 200uL

Observed MW:

28kDa

Calculated MW:

13kDa/28kDa

Applications:

WB IHC IF

Reactivity:

Human, Mouse, Rat

Protein Background

The protein encoded by this gene catalyzes the isomerization of mannose 6-phosphate to mannose 1-phosphate, which is a precursor to GDP-mannose necessary for the synthesis of dolichol-P-oligosaccharides. Mutations in this gene have been shown to cause defects in glycoprotein biosynthesis, which manifests as carbohydrate-deficient glycoprotein syndrome type I.

Immunogen information

Gene ID:

5373

Uniprot

O15305

Synonyms:

PMM2; CDG1; CDG1a; CDGS; PMI; PMI1; PMM 2

Antibody Information

Recommended dilutions:

WB 1:500 - 1:2000 IHC 1:50
- 1:200 IF 1:50 - 1:200

Source:

Rabbit

Isotype:

IgG

Purification:

Affinity purification

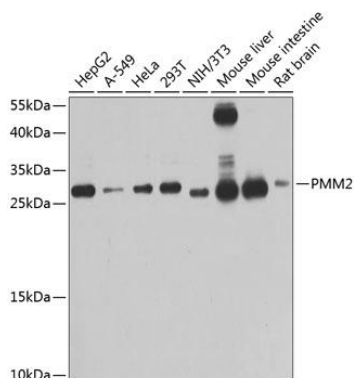
Immunogen:

Recombinant fusion protein containing a sequence corresponding to amino acids 1-246 of human PMM2 (NP_000294.1).

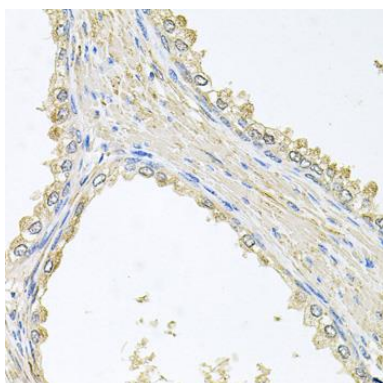
Storage:

Store at -20°C. Avoid freeze / thaw cycles. Buffer: PBS with 0.02% sodium azide, 50% glycerol, pH7.3.

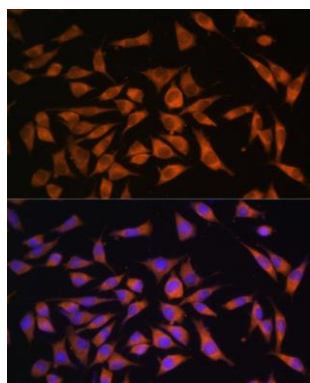
Product Images



Western blot analysis of extracts of various cell lines, using PMM2 antibody (CAB4026) at 1:1000 dilution. Secondary antibody: HRP Goat Anti-Rabbit IgG (H+L) (CABS014) at 1:10000 dilution. Lysates/proteins: 25ug per lane. Blocking buffer: 3% nonfat dry milk in TBST. Detection: ECL Basic Kit (CABM00020). Exposure time: 60s.



Immunohistochemistry of paraffin-embedded human prostate using PMM2 antibody (CAB4026) at dilution of 1:100 (40x lens).



Immunofluorescence analysis of L929 cells using PMM2 antibody (CAB4026) at dilution of 1:100. Blue: DAPI for nuclear staining.