

PPP6C Rabbit Polyclonal Antibody



CAB4039

Product Information

Size:

20uL, 50uL, 100uL, 200uL

Observed MW:

35kDa

Calculated MW:

32kDa/35kDa/38kDa

Applications:

WB

Reactivity:

Human, Mouse, Rat

Protein Background

This gene encodes the catalytic subunit of protein phosphatase, a component of a signaling pathway regulating cell cycle progression. Splice variants encoding different protein isoforms exist. The pseudogene of this gene is located on chromosome X.

Immunogen information

Gene ID:

5537

Uniprot

O00743

Synonyms:

PPP6C; PP6; PP6C

Antibody Information

Recommended dilutions:

WB 1:200 - 1:2000

Source:

Rabbit

Isotype:

IgG

Purification:

Affinity purification

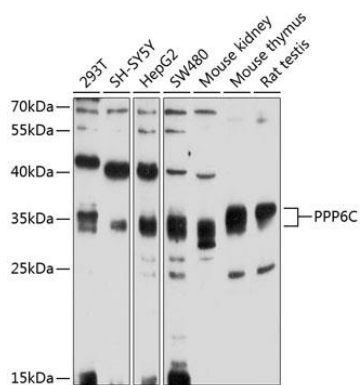
Immunogen:

Recombinant fusion protein containing a sequence corresponding to amino acids 1-305 of human PPP6C (NP_002712.1).

Storage:

Store at -20°C. Avoid freeze / thaw cycles. Buffer: PBS with 0.02% sodium azide, 50% glycerol, pH7.3.

Product Images



Western blot analysis of extracts of various cell lines, using PPP6C antibody (CAB4039) at 1:1000 dilution. Secondary antibody: HRP Goat Anti-Rabbit IgG (H+L) (CABS014) at 1:10000 dilution. Lysates/proteins: 25ug per lane. Blocking buffer: 3% nonfat dry milk in TBST. Detection: ECL Enhanced Kit (CABM00021). Exposure time: 90s.