

PRCP Rabbit Polyclonal Antibody



CAB4040

Product Information

Size:

20uL, 50uL, 100uL, 200uL

Observed MW:

56kDa

Calculated MW:

55kDa/58kDa

Applications:

WB

Reactivity:

Rat

Antibody Information

Recommended dilutions:

WB 1:1000 - 1:2000

Source:

Rabbit

Isotype:

IgG

Purification:

Affinity purification

Protein Background

This gene encodes a member of the peptidase S28 family of serine exopeptidases. The encoded preproprotein is proteolytically processed to generate the mature lysosomal prolylcarboxypeptidase. This enzyme cleaves C-terminal amino acids linked to proline in peptides such as angiotension II, III and des-Arg9-bradykinin. The cleavage occurs at acidic pH, but the enzyme activity is retained with some substrates at neutral pH. This enzyme has been shown to be an activator of the cell matrix-associated prekallikrein. The importance of angiotension II, one of the substrates of this enzyme, in regulating blood pressure and electrolyte balance suggests that this gene may be related to essential hypertension. A pseudogene of this gene has been identified on chromosome 2. Alternative splicing results in multiple transcript variants, at least one of which encodes an isoform that is proteolytically processed.

Immunogen information

Gene ID:

5547

Uniprot

P42785

Synonyms:

PRCP; HUMPCP; PCP

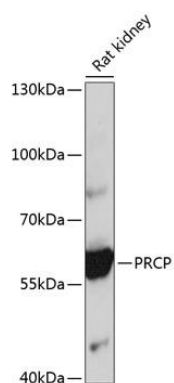
Immunogen:

Recombinant fusion protein containing a sequence corresponding to amino acids 407-496 of human PRCP (NP_005031.1).

Storage:

Store at -20°C. Avoid freeze / thaw cycles. Buffer: PBS with 0.02% sodium azide, 50% glycerol, pH7.3.

Product Images



Western blot analysis of extracts of rat kidney, using PRCP antibody (CAB4040) at 1:1000 dilution. Secondary antibody: HRP Goat Anti-Rabbit IgG (H+L) (CABS014) at 1:10000 dilution. Lysates/proteins: 25ug per lane. Blocking buffer: 3% nonfat dry milk in TBST. Detection: ECL Basic Kit (CABM00020). Exposure time: 10s.