

PRPH Rabbit Polyclonal Antibody



CAB4048

Product Information

Size:

20uL, 50uL, 100uL, 200uL

Observed MW:

54-62kDa

Calculated MW:

53kDa

Applications:

WB IHC

Reactivity:

Human, Mouse, Rat

Protein Background

This gene encodes a cytoskeletal protein found in neurons of the peripheral nervous system. The encoded protein is a type III intermediate filament protein with homology to other cytoskeletal proteins such as desmin, and is a different protein that the peripherin found in photoreceptors. Mutations in this gene have been associated with susceptibility to amyotrophic lateral sclerosis.

Immunogen information

Gene ID:

5630

Uniprot

P41219

Synonyms:

PRPH; NEF4; PRPH1

Antibody Information

Recommended dilutions:

WB 1:500 - 1:2000 IHC 1:20 - 1:200

Source:

Rabbit

Isotype:

IgG

Purification:

Affinity purification

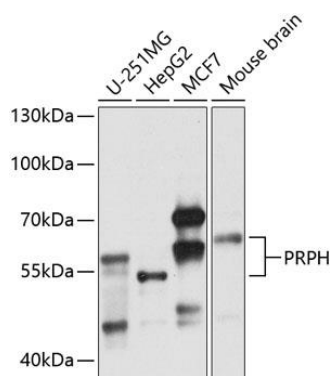
Immunogen:

Recombinant fusion protein containing a sequence corresponding to amino acids 1-260 of human PRPH (NP_006253.2).

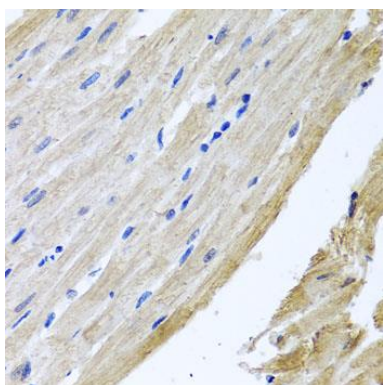
Storage:

Store at -20°C. Avoid freeze / thaw cycles. Buffer: PBS with 0.02% sodium azide, 50% glycerol, pH7.3.

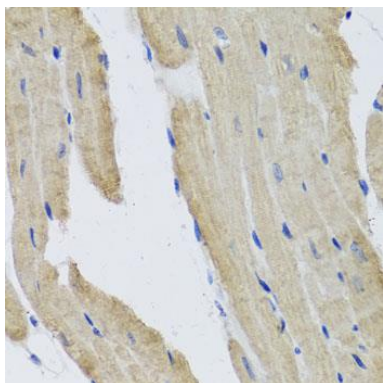
Product Images



Western blot analysis of extracts of various cell lines, using PRPH antibody (CAB4048) at 1:1000 dilution. Secondary antibody: HRP Goat Anti-Rabbit IgG (H+L) (CABS014) at 1:10000 dilution. Lysates/proteins: 25ug per lane. Blocking buffer: 3% nonfat dry milk in TBST. Detection: ECL Basic Kit (CABM00020). Exposure time: 90s.



Immunohistochemistry of paraffin-embedded rat heart using PRPH antibody (CAB4048) at dilution of 1:100 (40x lens).



Immunohistochemistry of paraffin-embedded mouse heart using PRPH antibody (CAB4048) at dilution of 1:100 (40x lens).