

# NDRG1 Rabbit Monoclonal Antibody



CAB4050

## Product Information

### Size:

20uL, 50uL, 100uL, 200uL

### Observed MW:

48kDa

### Calculated MW:

43kDa

### Applications:

WB IHC

### Reactivity:

Human, Mouse, Rat

## Antibody Information

### Recommended dilutions:

WB 1:500 - 1:2000 IHC 1:50  
- 1:200

### Source:

Rabbit

### Isotype:

IgG

### Purification:

Affinity purification

## Protein Background

This gene is a member of the N-myc downregulated gene family which belongs to the alpha/beta hydrolase superfamily. The protein encoded by this gene is a cytoplasmic protein involved in stress responses, hormone responses, cell growth, and differentiation. The encoded protein is necessary for p53-mediated caspase activation and apoptosis. Mutations in this gene are a cause of Charcot-Marie-Tooth disease type 4D, and expression of this gene may be a prognostic indicator for several types of cancer. Alternatively spliced transcript variants encoding multiple isoforms have been observed for this gene. [provided by RefSeq, May 2012]

## Immunogen information

### Gene ID:

10397

### Uniprot

Q92597

### Synonyms:

CAP43; CMT4D; DRG-1; DRG1; GC4; HMSNL; NDR1; NMSL;  
PROXY1; RIT42; RTP; TARG1; TDD5

### Immunogen:

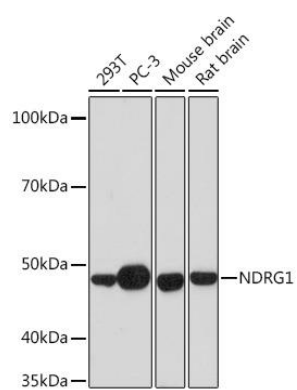
A synthesized peptide derived from human NDRG1

### Storage:

Store at -20°C. Avoid freeze / thaw cycles. Buffer: PBS with 0.02%  
sodium azide, 0.05% BSA, 50% glycerol, pH7.3.

## Product Images

---



Western blot - NDRG1 Rabbit mAb (CAB4050)