

PTH2R Rabbit Polyclonal Antibody



CAB4058

Product Information

Size:

20uL, 50uL, 100uL, 200uL

Observed MW:

62kDa

Calculated MW:

62kDa

Applications:

WB

Reactivity:

Human

Protein Background

The protein encoded by this gene is a member of the G-protein coupled receptor 2 family. This protein is a receptor for parathyroid hormone (PTH). This receptor is more selective in ligand recognition and has a more specific tissue distribution compared to parathyroid hormone receptor 1 (PTH1R). It is activated only by PTH and not by parathyroid hormone-like hormone (PTH1LH) and is particularly abundant in brain and pancreas. Alternative splicing results in multiple transcript variants.

Immunogen information

Gene ID:

5746

Uniprot

P49190

Synonyms:

PTH2R; PTHR2

Antibody Information

Recommended dilutions:

WB 1:500 - 1:2000

Source:

Rabbit

Isotype:

IgG

Purification:

Affinity purification

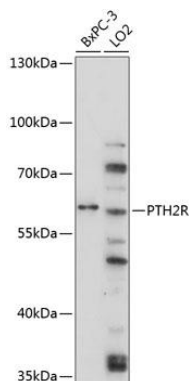
Immunogen:

Recombinant fusion protein containing a sequence corresponding to amino acids 27-145 of human PTH2R (NP_005039.1).

Storage:

Store at -20°C. Avoid freeze / thaw cycles. Buffer: PBS with 0.02% sodium azide, 50% glycerol, pH7.3.

Product Images



Western blot analysis of extracts of various cell lines, using PTH2R antibody (CAB4058) at 1:3000 dilution. Secondary antibody: HRP Goat Anti-Rabbit IgG (H+L) (CABS014) at 1:10000 dilution. Lysates/proteins: 25ug per lane. Blocking buffer: 3% nonfat dry milk in TBST. Detection: ECL Enhanced Kit (CABM00021). Exposure time: 10s.