

MYH11 Rabbit Monoclonal Antibody



CAB4064

Product Information

Size:

20uL, 50uL, 100uL, 200uL

Observed MW:

250kDa

Calculated MW:

250kDa

Applications:

WB IF

Reactivity:

Mouse, Rat

Antibody Information

Recommended dilutions:

WB 1:500 - 1:2000 IF 1:50 - 1:200

Source:

Rabbit

Isotype:

IgG

Purification:

Affinity purification

Protein Background

The protein encoded by this gene is a smooth muscle myosin belonging to the myosin heavy chain family. The gene product is a subunit of a hexameric protein that consists of two heavy chain subunits and two pairs of non-identical light chain subunits. It functions as a major contractile protein, converting chemical energy into mechanical energy through the hydrolysis of ATP. The gene encoding a human ortholog of rat NUDE1 is transcribed from the reverse strand of this gene, and its 3' end overlaps with that of the latter. The pericentric inversion of chromosome 16 [inv(16)(p13q22)] produces a chimeric transcript that encodes a protein consisting of the first 165 residues from the N terminus of core-binding factor beta in a fusion with the C-terminal portion of the smooth muscle myosin heavy chain. This chromosomal rearrangement is associated with acute myeloid leukemia of the M4Eo subtype. Alternative splicing generates isoforms that are differentially expressed, with ratios changing during muscle cell maturation. Alternatively spliced transcript variants encoding different isoforms have been identified. [provided by RefSeq, Jul 2008]

Immunogen information

Gene ID:

4629

Uniprot

P35749

Synonyms:

AAT4; FAA4; SMHC; SMMHC

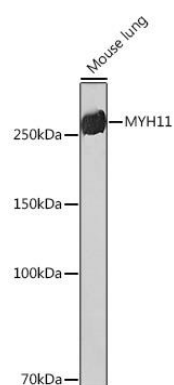
Immunogen:

A synthesized peptide derived from human MYH11

Storage:

Store at -20°C. Avoid freeze / thaw cycles. Buffer: PBS with 0.02% sodium azide, 0.05% BSA, 50% glycerol, pH7.3.

Product Images



Western blot - MYH11 Rabbit mAb (CAB4064)