

# RALB Rabbit Polyclonal Antibody



CAB4069

---

## Product Information

### Size:

20uL, 50uL, 100uL, 200uL

### Observed MW:

23kDa

### Calculated MW:

23kDa/25kDa

### Applications:

WB IHC

### Reactivity:

Human, Mouse, Rat

## Protein Background

This gene encodes a GTP-binding protein that belongs to the small GTPase superfamily and Ras family of proteins. GTP-binding proteins mediate the transmembrane signaling initiated by the occupancy of certain cell surface receptors.

## Immunogen information

### Gene ID:

5899

### Uniprot

P11234

### Synonyms:

RALB

## Antibody Information

### Recommended dilutions:

WB 1:500 - 1:2000 IHC 1:50  
- 1:200

### Source:

Rabbit

### Isotype:

IgG

### Purification:

Affinity purification

### Immunogen:

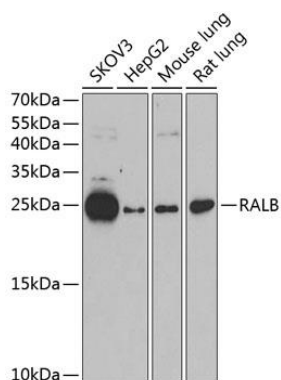
Recombinant fusion protein containing a sequence corresponding to amino acids 1-206 of human RALB (NP\_002872.1).

### Storage:

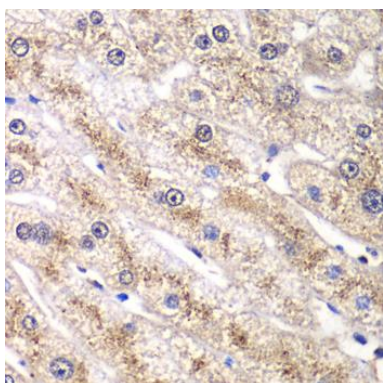
Store at -20°C. Avoid freeze / thaw cycles. Buffer: PBS with 0.02% sodium azide, 50% glycerol, pH7.3.

## Product Images

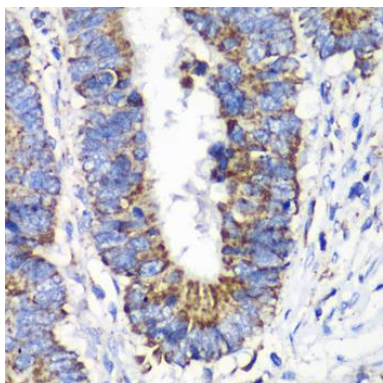
---



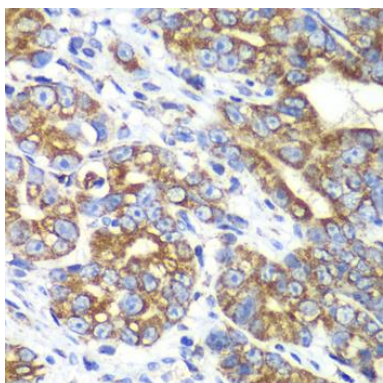
Western blot analysis of extracts of various cell lines, using RALB antibody (CAB4069) at 1:1000 dilution. Secondary antibody: HRP Goat Anti-Rabbit IgG (H+L) (CABS014) at 1:10000 dilution. Lysates/proteins: 25ug per lane. Blocking buffer: 3% nonfat dry milk in TBST. Detection: ECL Basic Kit (CABM00020). Exposure time: 90s.



Immunohistochemistry of paraffin-embedded human liver damage using RALB antibody (CAB4069) at dilution of 1:100 (40x lens).



Immunohistochemistry of paraffin-embedded human colon carcinoma using RALB antibody (CAB4069) at dilution of 1:100 (40x lens).



Immunohistochemistry of paraffin-embedded human gastric cancer using RALB antibody (CAB4069) at dilution of 1:100 (40x lens).